

V6

Inspiring everyday efficiency



Product Inquiry

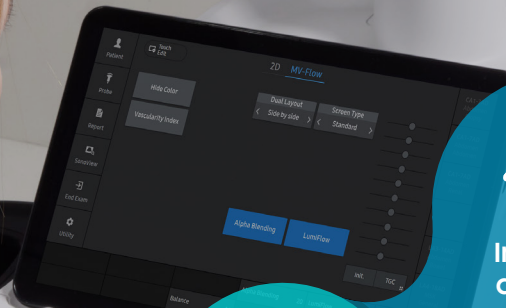
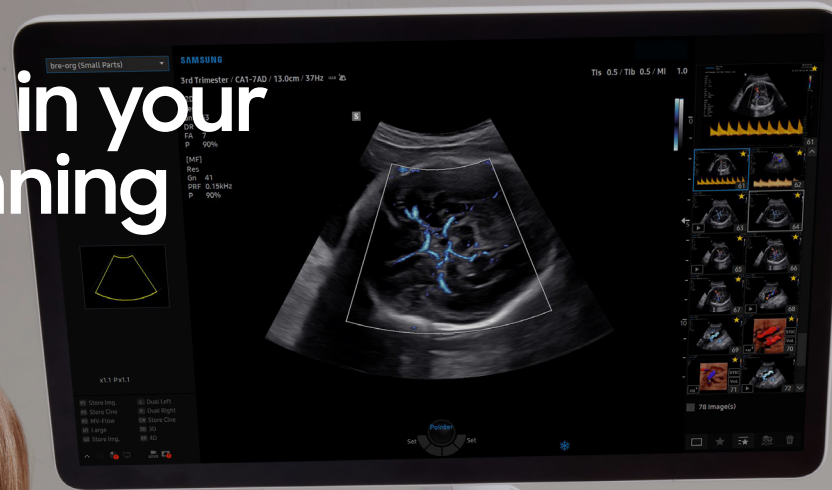
Embracing efficiency in your daily ultrasound scanning

Begin your journey towards efficient healthcare with the Samsung V6 ultrasound system. Our robust solution for women's health offers both image clarity and advanced automated features. Additionally, Samsung's cutting-edge imaging engine, Crystal Architecture™ ensures a reliable ultrasound experience.

Experience simplicity with our easy-to-use system, specifically designed to alleviate your workload and enhance usability. Furthermore, our powerful system comes with battery capability, providing additional operational convenience. The Samsung V6 ultrasound system is a partner you can depend on to deliver exceptional efficiency to meet your daily ultrasound needs.



[View webpage](#)



Intelligent diagnosis



Image clarity



Efficient Care



Easy to use



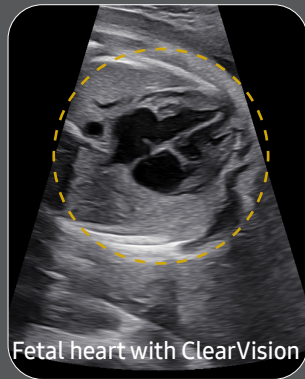
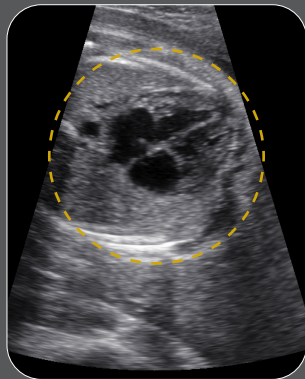
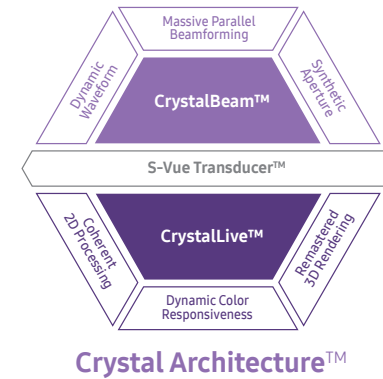
Versatility



Accessibility

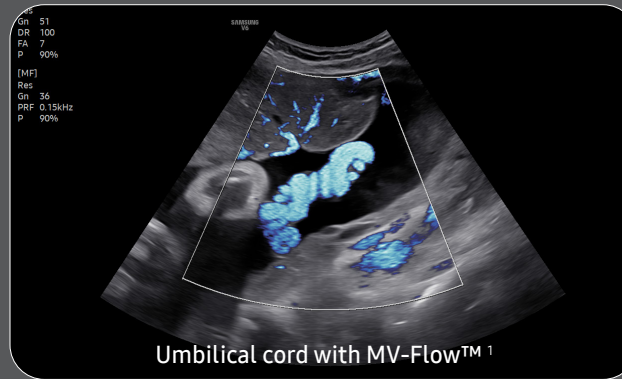
Elevating confidence with superb imaging performance

The V6 delivers exceptional 2D, 3D, and color image quality tailored for women's health, driven by Samsung's core imaging engine, Crystal Architecture™. With its comprehensive imaging capabilities, the V6 is designed to seamlessly support your daily ultrasound scanning needs, enabling clear and accurate image acquisition. Experience confidence and accuracy in ultrasound scanning with the V6.



Fetal heart with ClearVision

Reduce noise to improve 2D image quality



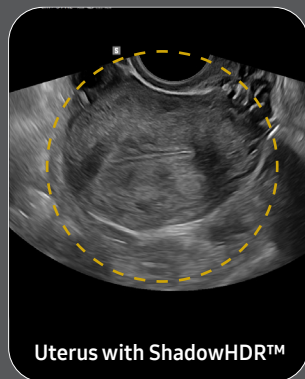
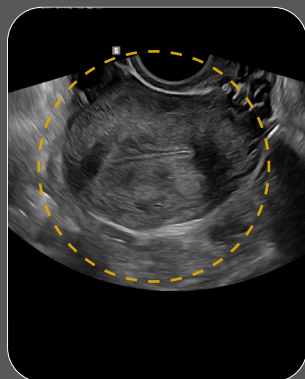
Umbilical cord with MV-Flow™ 1

Visualize slow flow in microvascular vessels



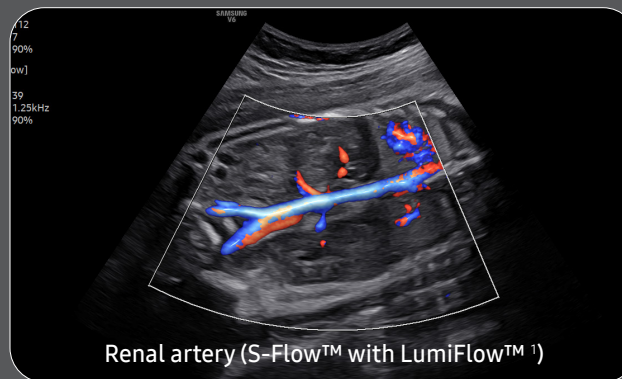
Fetal face with RealisticVue™ 1

Express 3D anatomy with detail and realism



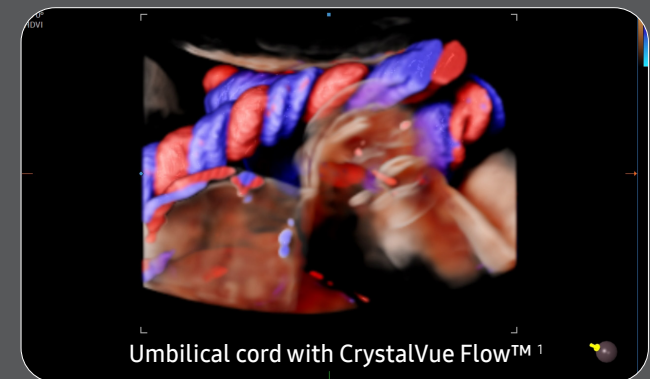
Uterus with ShadowHDR™

Enhance hidden structures in shadowed regions



Renal artery (S-Flow™ with LumiFlow™ 1)

Show blood flow in vessels in a 3D-like display



Umbilical cord with CrystalVue Flow™ 1

Visualize internal and external structures, and blood flow morphology using volume rendering technologies

1. Optional feature, additional purchase required.

Reach new diagnostic confidence with comprehensive tools

Enhance your daily ultrasound diagnosis with the V6, a versatile solution created to efficiently support your clinical demands in women's health. Benefit from our latest automation tools, which enable you to work with greater ease and achieve reliable results. Our aim is to assist you in prioritizing patient care, and the V6 stands as an excellent choice.



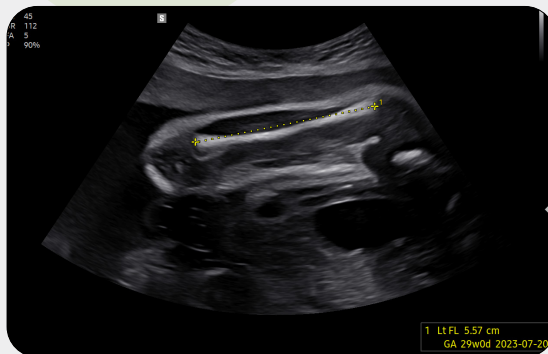
An automated classification and annotation of the images



ViewAssist™¹ a feature based on Deep Learning technology, provides automatic classification of the ultrasound images and annotation of the structures to help healthcare professionals in convenient measurement.



White paper



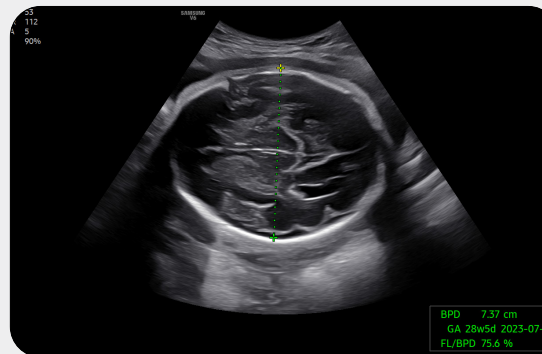
An automated fetal biometry measurement



BiometryAssist™, a feature based on Deep Learning technology, is an automatic technology for biometric measurement. It enables users to measure the fetal growth parameters with one click while maintaining exam consistency.



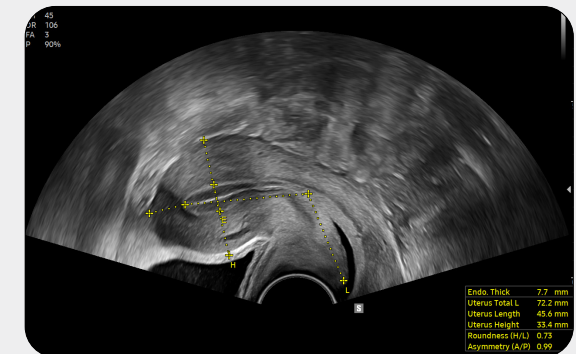
White paper



Measure the size and shape of the uterus with AI technology



UterineAssist™¹, based on Deep Learning technology, automatically measures the size and shape of the uterus, assisting in detecting signs of uterine-related abnormalities, as well as reducing scan time.



Measure the size of follicles based on 2D imaging

2D Follicle™¹ identifies and measures the size of follicles based on a 2D image and provides information about the status during gynecology examinations.

Analyze selected thyroid lesions and report thyroid assessment



S-Detect™^{1,3} for Thyroid analyzes selected lesions in the thyroid ultrasound study and shows the analysis data, provides standardized reporting based on the ATA, BTA, EU-TIRADS, K-TIRADS, and ACR-TIRADS* guidelines; and helps diagnosis with the streamlined workflow.

* ATA: American Thyroid Association BTA: British Thyroid Association
EU-TIRADS: European Thyroid Imaging Reporting and Data System
K-TIRADS: Korean Thyroid Imaging Reporting and Data System
ACR-TIRADS: American College of Radiology Thyroid Imaging Reporting and Data System

Support in deciding delivery method



LaborAssist™¹ provides information about the progress of delivery from the automatic measurement of the AoP (Angle of Progress) and the direction of the fetal head. This helps in making delivery decisions and effective communication with the mother about the delivery process.



White paper

* AoP complies with the metrics specified in the ISUOG Guideline.

Assess the risk of infertility using volume data

5D Follicle™¹ identifies and measures multiple ovarian follicles in one scan for rapid assessment of follicular size and status during controlled ovarian stimulation.

Analyze selected breast lesions and report breast assessment



S-Detect™^{1,3} for Breast analyzes selected lesions in the breast ultrasound study and shows the analysis data, applies BI-RADS ATLAS* to provide standardized reporting; and helps diagnosis with the streamlined workflow.



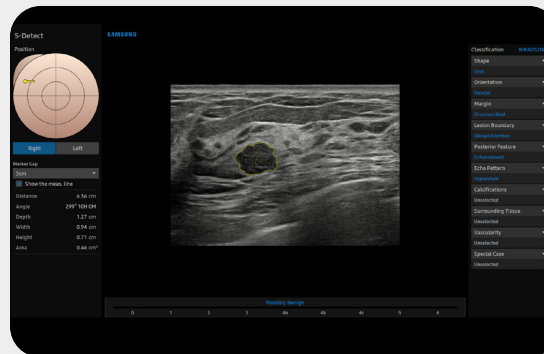
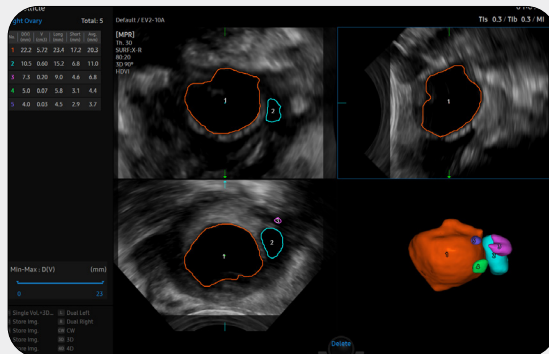
White paper

Classify ovarian tumors

IOTA-ADNEX™¹ is an ovarian tumor classification solution of IOTA Group. Applying the ADNEX model to the system, it can perform all procedures from the initial scan to the final report in the ultrasound diagnosis system.



White paper



* Breast Imaging-Reporting and Data System, Atlas
It is a registered trademark of ACR and all rights reserved by ACR.

Examine fetal heart including blood flow dynamics

5D Heart Color™¹ identifies 9 standard planes of the heart using fetal STIC data and important information about fetal heart development, complying with AIUM guidelines. It also offers dedicated Preset, Predictive Cursor, Diagnostic Alert, and heart Diastole/Systole timepoints.

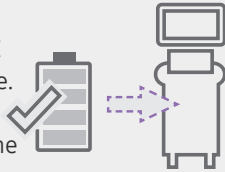
Other features E-Strain™¹, ElastoScan+™^{1,2}, CEUS+ HyCoSy¹, 5D CNS+™¹, 5D Limb Vol.™¹

Optimize workflow with precious time-saving tools

V6 is specifically designed to optimize the work efficiency of healthcare professionals. Notably through its remote accessibility, streamlined workflows, wider screen view for enhanced user experience, and its compact yet powerful design with battery capability, making it adaptable for diverse medical environments.

Continue working even when AC power is temporarily unavailable

BatteryAssist™¹ provides battery power to the system, enabling users to perform scans when AC power is temporarily unavailable. It also allows the system to be moved without having to turn the power off and then back on.



* The live scan time without AC power is about 3 times longer than the live scan time of the previous model, HS60.

Build predefined protocols to ensure every step is followed every time

EzExam+™¹ enables you to build or use a predefined protocol, and assign protocols for examinations that are regularly performed in the hospital in order to reduce the number of steps that you have to go through.



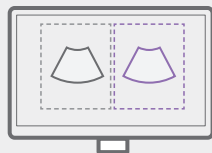
Customize frequently used functions on the touchscreen

TouchEdit, a customizable touchscreen, allows the user to move frequently used functions to the first page.



Compare previous and current exam in a side-by-side display

EzCompare™ automatically matches the image settings, annotations, and bodymarkers from the prior study.



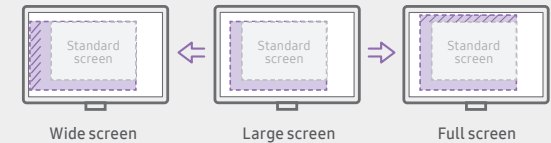
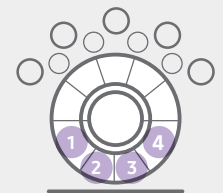
Select transducer and preset combinations in one click

QuickPreset allows the user to select the most common transducer and preset combinations in one click.



Assign functions to the buttons near the trackball

The buttons around the trackball can be customized for easy selection of commonly used functions.

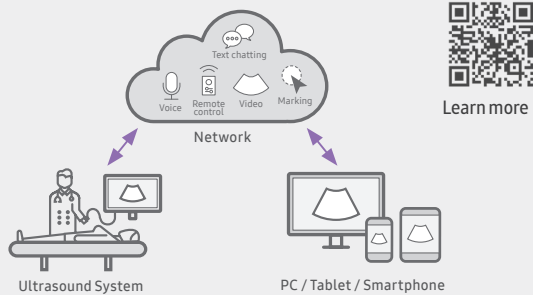


See images in expanded view

The ultrasound examination can be performed while viewing the images and cines that are expanded at various ratios according to the user preference.

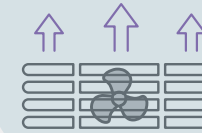
Real-time image sharing solution

SonoSync™ 1,4 is available in PC and smartphone, etc. as a real-time image share solution that allows communication for care guide and training between doctors and sonographers. In addition, voice chatting, text chatting and real-time marking functions are provided for better communication; and the MultiVue function is included that allows monitoring multiple ultrasound images on a single screen.



Effective cooling system

An effective airflow system cools down the ultrasound system by constantly letting heat out and reducing fan noise.



Recycled materials

Eco-conscious resin cover is applied to the air vent exterior cover.

Simple transfer of fetal ultrasound images and clips

HelloMom™ 1,5 supports simple and secure transfer of fetal ultrasound images and clips wirelessly from the ultrasound system directly to an external device. These images can be shared easily with others.



Scan QR Code

Samsung healthcare cybersecurity

To address the emerging need for cybersecurity, Samsung provides a solution to support our customers by offering the tools to protect against cyberthreats that may compromise invaluable patient data and ultimately degrade the quality of care.



Eco Packaging

Eco-conscious recycled paper is included in the product packaging.



1. Optional feature, additional purchase required.

Comprehensive selection of transducers

Curved array transducers



Abdomen, Obstetrics, Gynecology, Pediatric, Musculoskeletal, Vascular, Urology



Abdomen, Obstetrics, Gynecology, Pediatric, Musculoskeletal, Vascular, Urology, Thoracic



Abdomen, Obstetrics, Gynecology, Pediatric, Musculoskeletal, Vascular, Urology, Thoracic



Abdomen, Pediatric, Vascular

Volume transducers



Abdomen, Obstetrics, Gynecology, Urology



Obstetrics, Gynecology, Urology

* Ergonomic transducers

The new endocavity transducer supports natural grip by moving the max-width point to a more forward position and also increasing the length of the grip to allow balanced weight distribution.



Cleaning and disinfection guide

Endocavity transducers



Obstetrics, Gynecology, Urology



Obstetrics, Gynecology, Urology



Obstetrics, Gynecology, Urology

Linear array transducers



Abdomen, Pediatric, Musculoskeletal, Vascular, Small parts



Abdomen, Pediatric, Musculoskeletal, Vascular, Small parts



Musculoskeletal, Pediatric, Vascular, Small parts



Musculoskeletal, Intraoperative

Phased array transducers



Cardiac, Vascular, Abdomen, Pediatric, TCD, Thoracic



Cardiac, Pediatric, Abdomen, Vascular, TCD



Cardiac, Pediatric, Abdomen, Vascular, TCD

CW transducers



Cardiac, Vascular, TCD



Cardiac, Vascular, TCD

TEE transducer



Cardiac

- * This product, features, options, and transducers may not be commercially available in some countries.
- * Sales and Shipments are effective only after the approval by the regulatory affairs. Please contact your local sales representative for further details.
- * This product is a medical device, please read the user manual carefully before use.
- * S-Vue Transducer™ is the name of Samsung's advanced transducer technology.

1. Optional feature, additional purchase required.
2. Strain value for ElastoScan+™ is not applicable in the United States and Canada.
3. Recommendations about whether results are benign or malignant in S-Detect™ are not applicable in the United States.
4. SonoSync™ is an image sharing solution.
5. A purchase of Mobile Export option is required to use HelloMom™.

SAMSUNG MEDISON CO., LTD.

© 2023 Samsung Medison All Rights Reserved.
Samsung Medison reserves the right to modify the design, packaging, specifications, and features shown herein, without prior notice or obligation.