



ANATOM Precision

High-end and AI fully powered intelligent 128-slice CT scanner







Insight into life

Shenzhen Anke High-tech Co., Ltd.

Address: Block B, LingYa Industrial Zone, Tangtou No.1 Road,
Bao'an District, Shenzhen, 518108, P.R. China
Tel: +86-755-21622518 26688889
Fax: +86-755-26695307 26685908
Email: anke@anke.com
Website: www.anke.com

Follow us on:

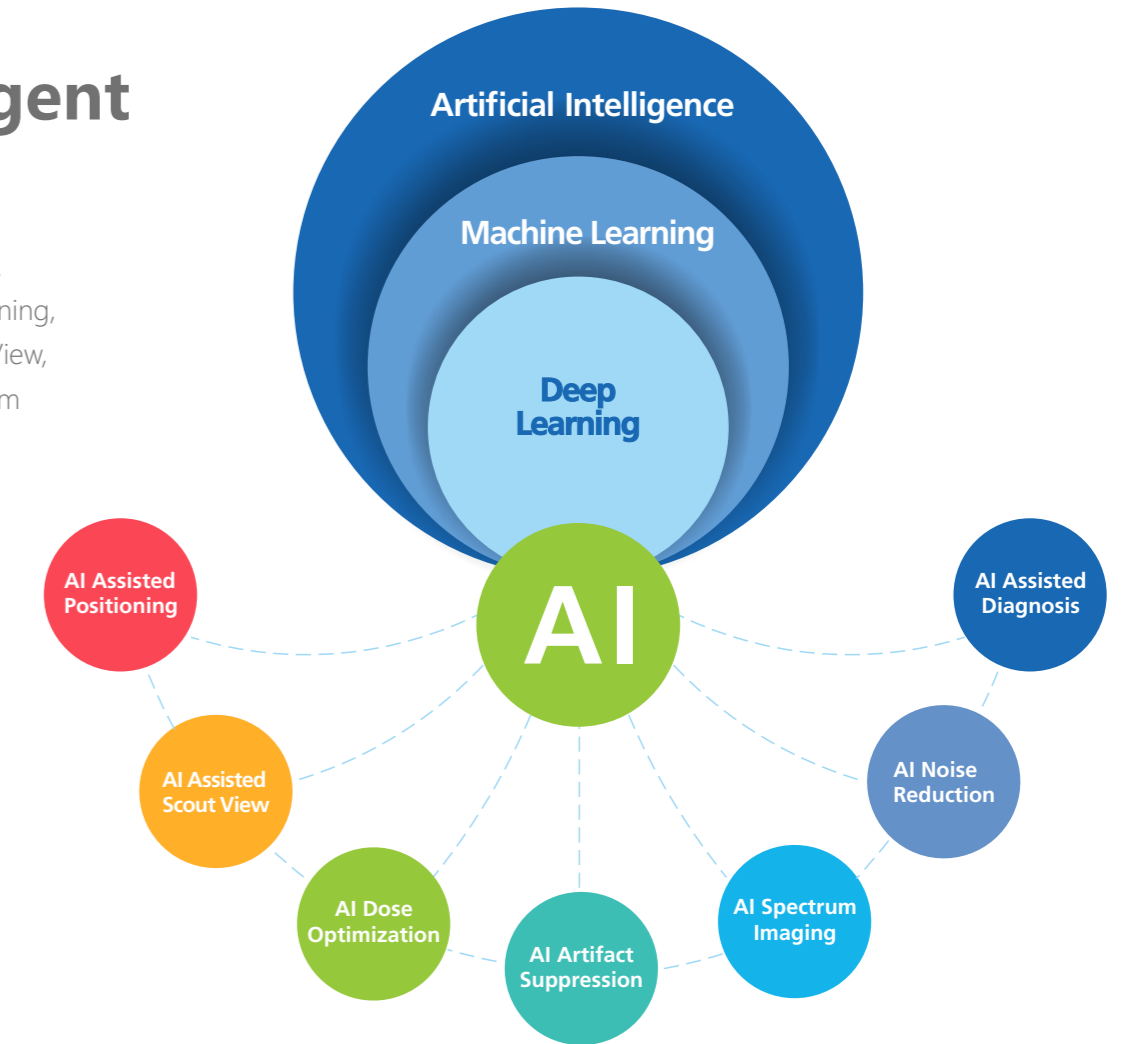
-  ANKE(@ankeint)
-  ANKE(@ankemri)
-  ANKE(@ankemarcom)
-  Shenzhen Anke High-tech Co., Ltd

ANATOM Precision, is our new coming member of our CT family, which is a high-end and AI fully powered intelligent 128-slice CT scanner. It features comprehensive clinical applications from routine to cardiac imaging, especially advanced spectrum imaging which allows you conduct high-level applications and delivers you more confidence in diagnoses compared with traditional CT scanner.



AI Powered Intelligent CT Scanner

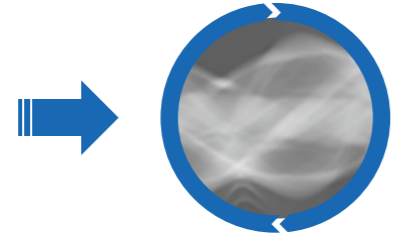
ANATOM Precision is an intelligent AI CT scanner. AI has been applied in the whole process of scanning, from it's beginning of patient Positioning, Scout View, Dose Optimization, Artifact Suppression, Spectrum Imaging, Image Noise Reduction and to the end of Diagnosis.



Ultra-low Dose CT Scanner



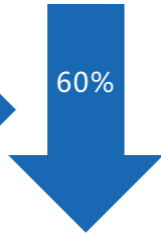
Raw-data Space Denoise Processing



Projection Space Denoise Processing



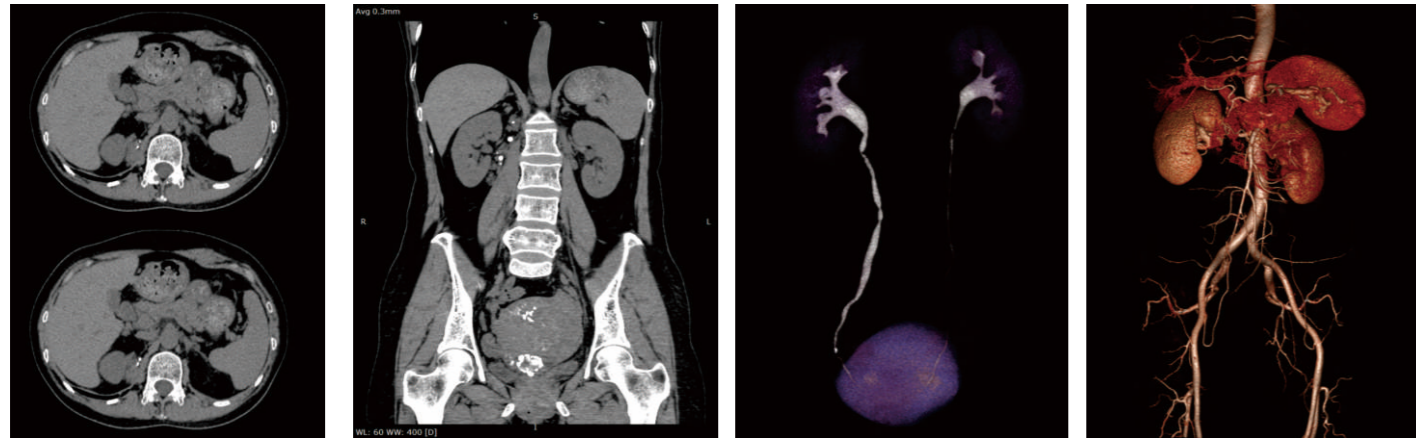
Image Space Denoise Processing



Admir^{3D} Iterative Reconstruction Technology
Admir^{3D} iteration technology is based on the original data space, the projection space after correction and image space

ASR-AI Super Resolution

ASR is extremely high resolution reconstruction algorithm for obtaining superb image quality, which is accelerated by AI. It allows you make very clear detailed visibility of tiny structure with high resolution and contrast.

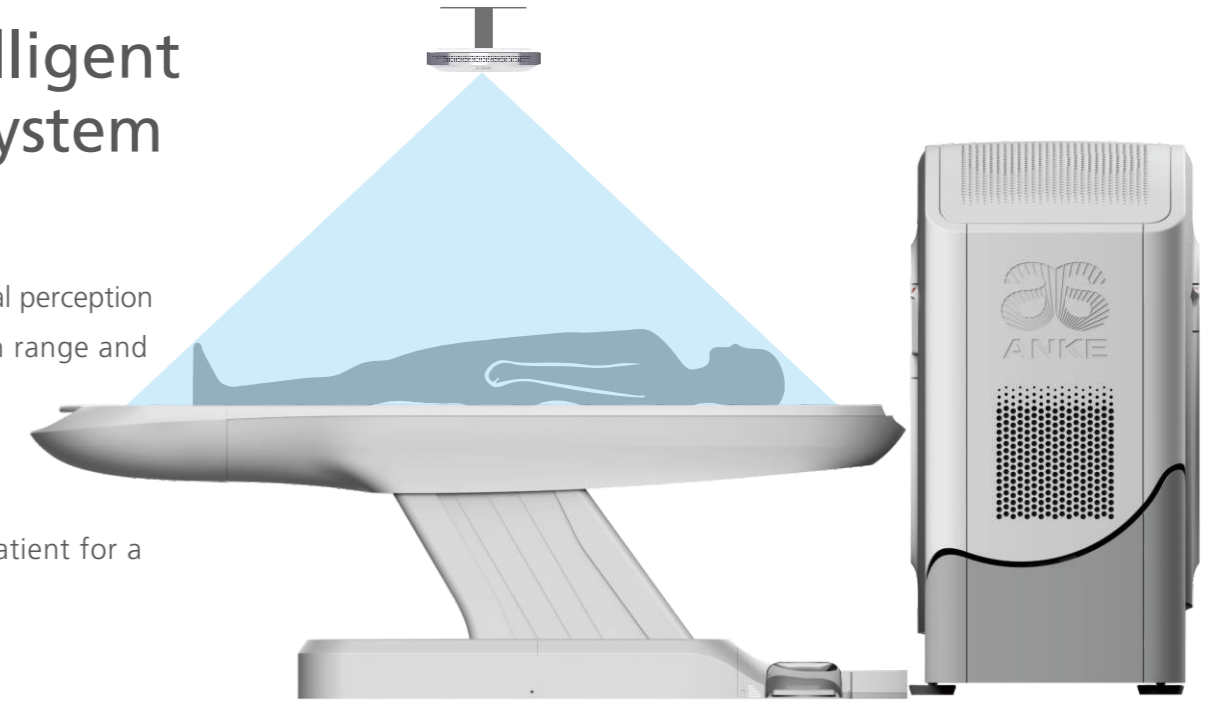


120 kVp, Adose, 0.5 sec./rotation, Pitch=1.375, Collimation Width=40 mm, Slice 0.3125 mm, Scan Time=5.6 sec.

*AccuPositioning-intelligent sky-eye positioning system based on AI

Applying AI deep learning algorithm, sky-eye visual perception intelligently recognize the 3D center of the scan range and automatically aligns it with the isocenter.

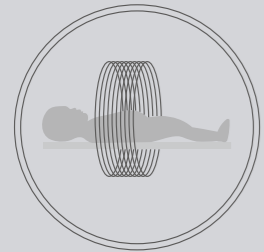
With one click, AccuPositioning uses all of this information to automatically center your patient for a completely hands-free positioning experience.



* AI Artifact Suppression

Gantry's built-in camera-"Eagle Eye" allows real-time monitoring of the patient's status, together with the AI-based AccuClear function, and enables intelligent real time image artifact correction.

AccuDose-Comprehensive low dose imaging



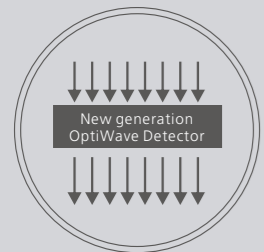
Pediatric Scan Protocol



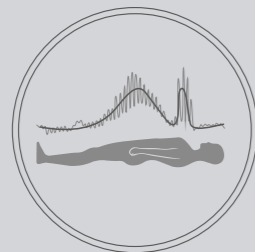
Individual Dose Monitoring



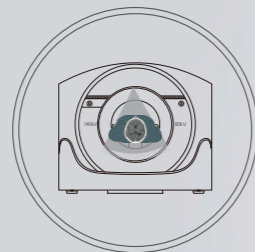
AccuShape Filter



Efficient Detector



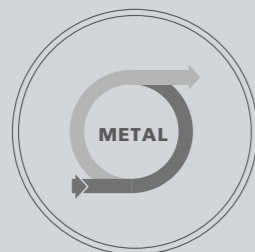
Adose Dose Modulation



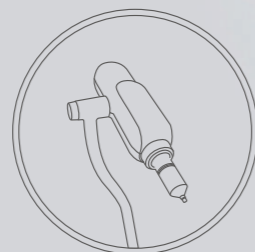
AccuSpin



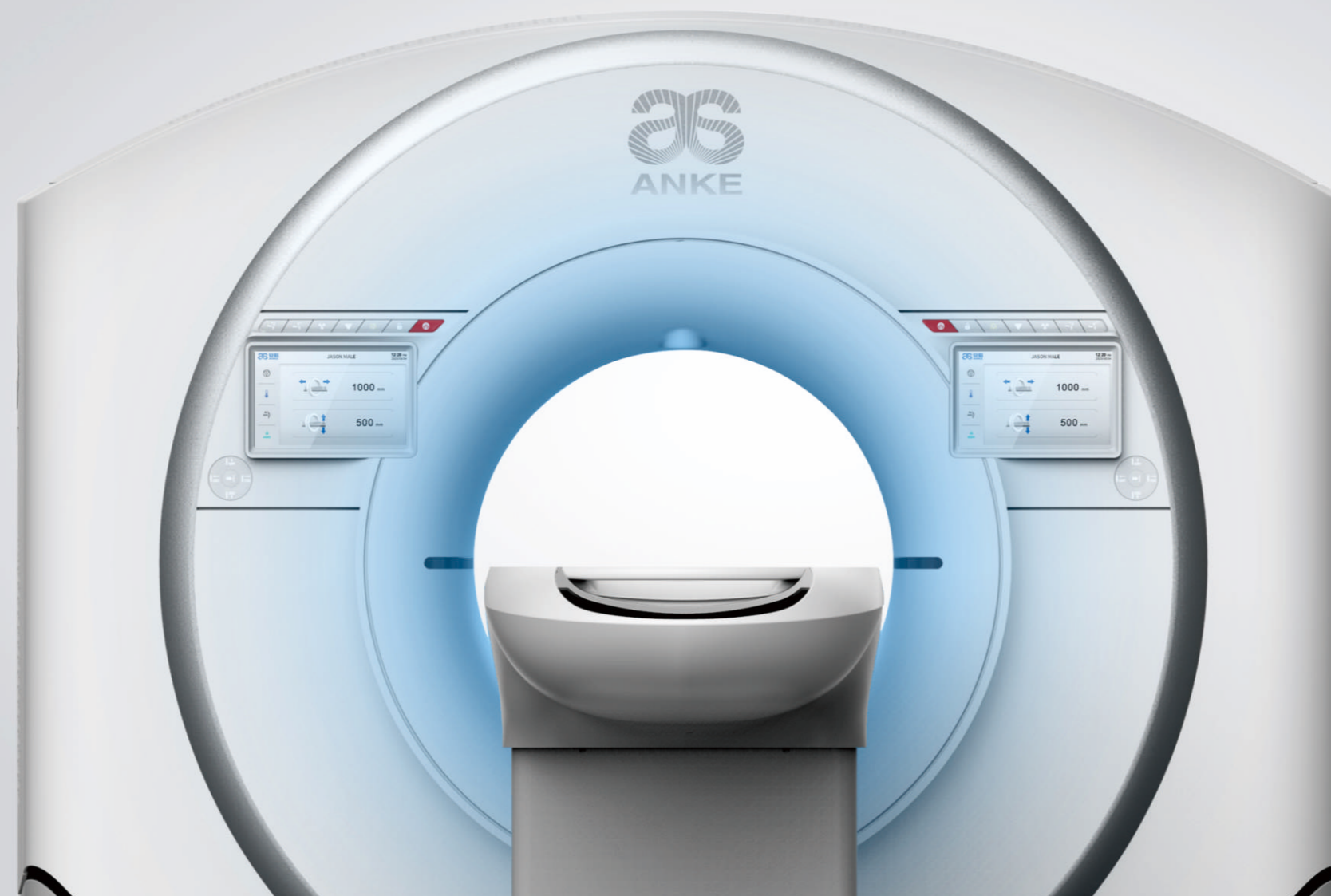
Iterative Reconstruction



Amast

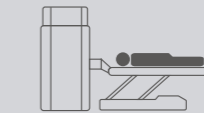


Contrast Agent Tracking Technology



AccuScan-Enjoy ease

Convenient and efficient operation process greatly improve work efficiency to achieve high volume of patients



AccuOrientation

Preset intelligent positioning procedures to enable one-button accurate patient positioning



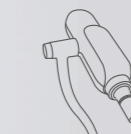
AccuEmergency

Skip patient registration for emergency scansto save time



AccuScanning

Carefully designed default scan protocols help to get high quality images with ease



AccuTracing

Automatic bolus tracking to trigger the scan for precise scan timing



AccuReconstruction

Up to 65 frms / sec real-time reconstruction



AccuPrinting

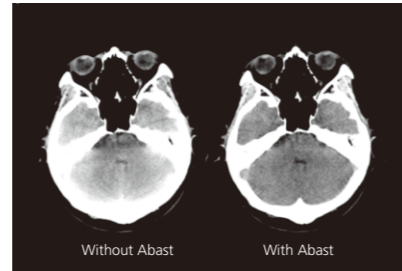
Intelligent typesetting and quick printing to save time

AccuOrgan-Targeted organ imaging

To achieve high precision imaging of each part of human body at low dose and low energy consumption

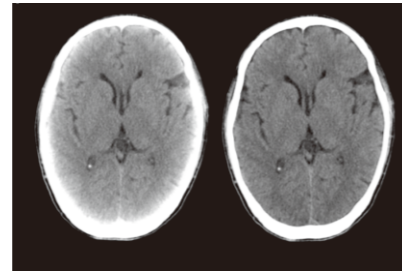
Abast-Bone artifact suppression technology

Abast eliminates the X-ray beam hardening effects to the cerebellum, brain stem and other parts of the brain and clearly shows the structure and lesions of the brain stem and cerebellum.



AccuHead-Gray & white matter enhancement technology

AccuHead technology is specifically designed for brain scans to improve the contrast between gray matter and white matter without sacrificing image quality.



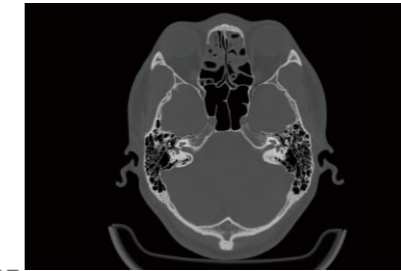
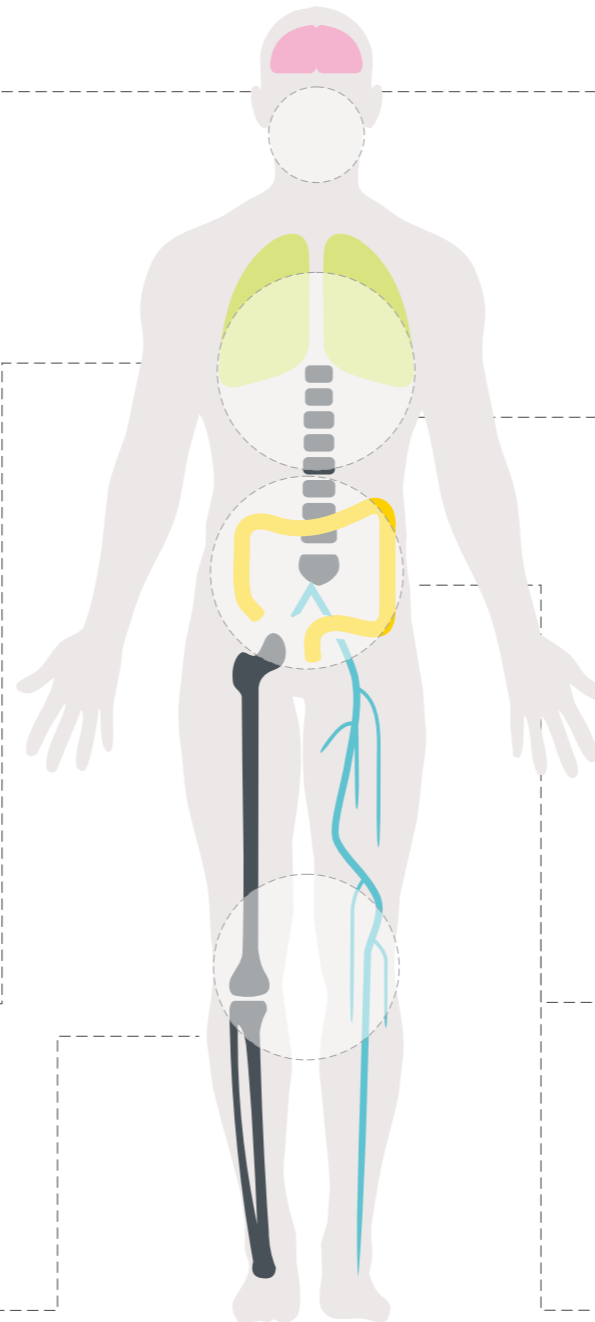
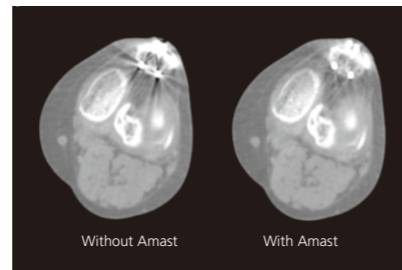
AccuOrgan-High resolution lung imaging

High resolution images of the lung can be obtained at only 30%~40% of conventional radiation dose



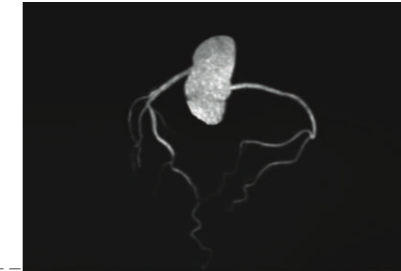
Amast-Metal artifact suppression

Dual-domain iteration is adopted to effectively remove metal artifacts and restore the soft tissue around the metal



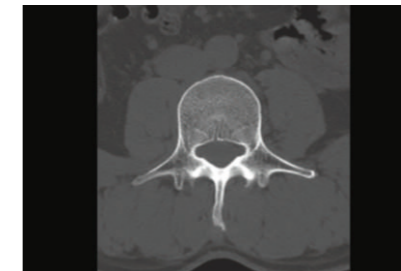
AccuImage-Microscopic imaging technology

1024x1024 matrix to display more details of the pathological changes and provide a reliable information for early detection, early diagnosis and early treatment of the diseases



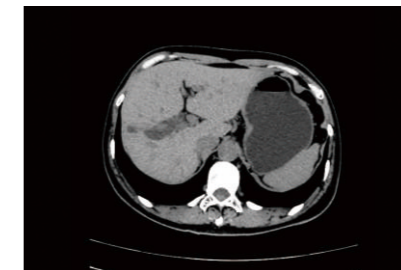
Aheart-Coronary angiography

Innovative ECG gated trigger and real-time dynamic tube current modulation are applied to achieve low dose HD coronary angiography, which can clearly reveal the fine structure of coronary arteries



AccuBone-High resolution bone imaging

Enhanced bone edge contrast can provide accurate anatomic relationships and show early destruction and cyst of subchondral bone like lesions and articular cartilage calcifications



AccuOrgan-Body high resolution imaging

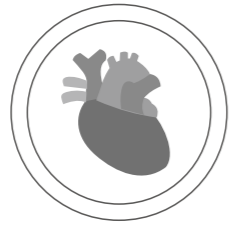
Combined with the AccuImage microscopic imaging technology, AccuOrgan technology can significantly increase the display of fine structure and morphology of the abdomen and provide more accurate images for the early diagnosis of small lesions

Comprehensive CCTA Solution

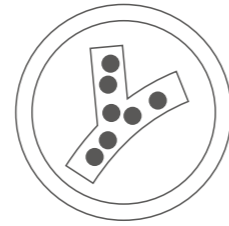
Perfect for patients with high heart rates and complex rhythms, enabling CCTA imaging at ultra-low doses and low contrast dosages



AccuPitch coronary adaptive pitch



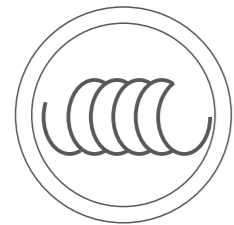
AccuGating intelligent gating CCTA imaging



Aheart intelligent low-dose CCTA image



AccuCardio prospective scan for arrhythmia



Large pitch HD CCTA imaging



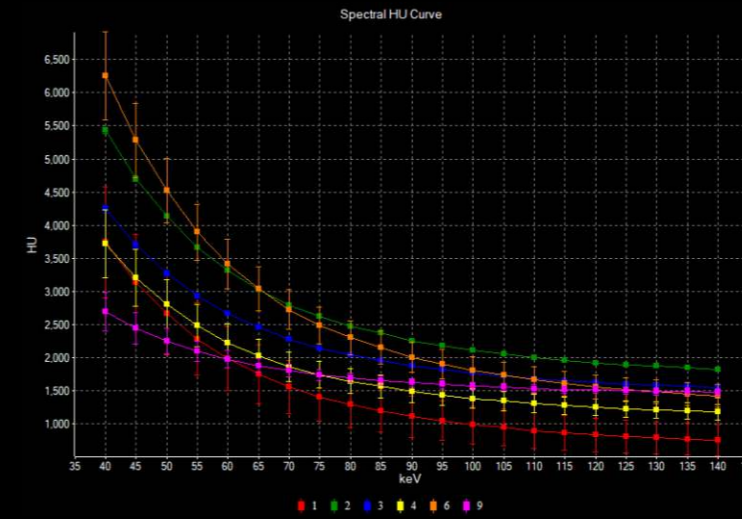
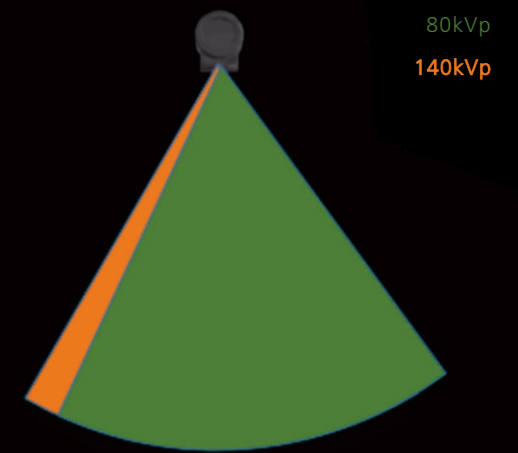
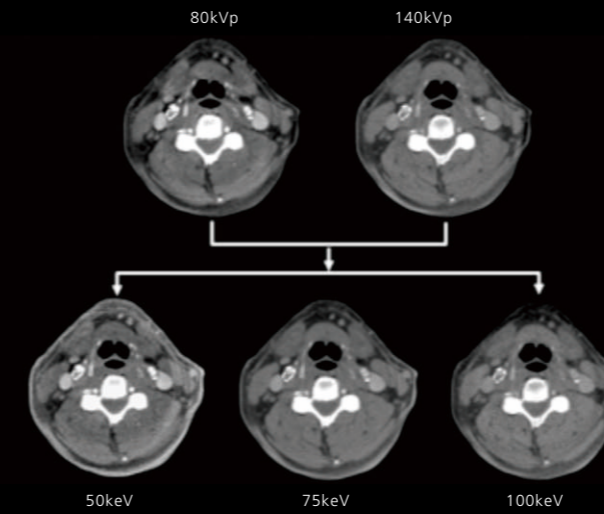
AccuTracking intelligent coronary artery tracking



Parameters self-adaptive CCTA imaging

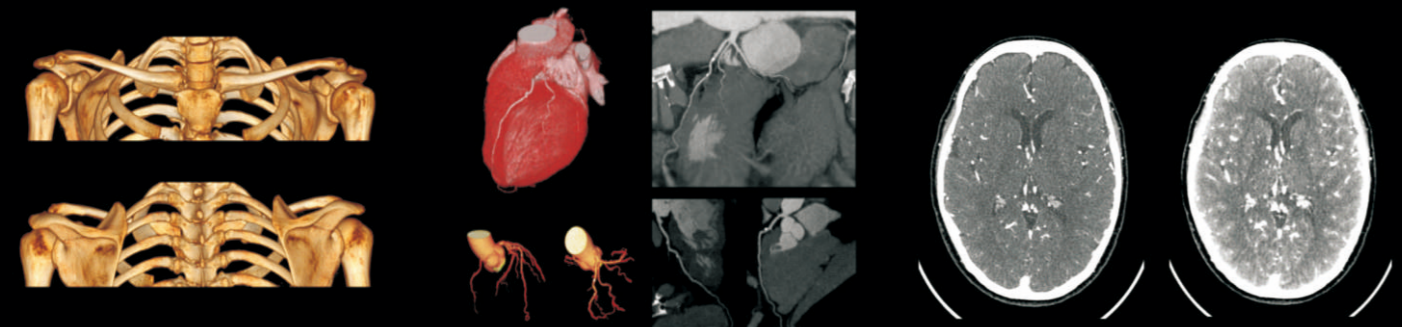
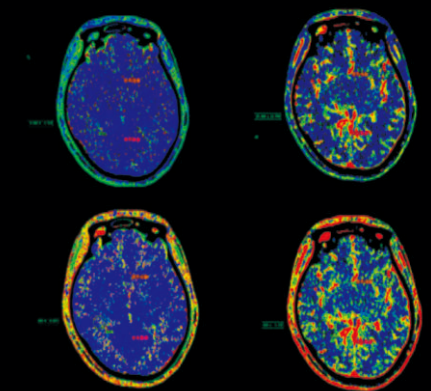
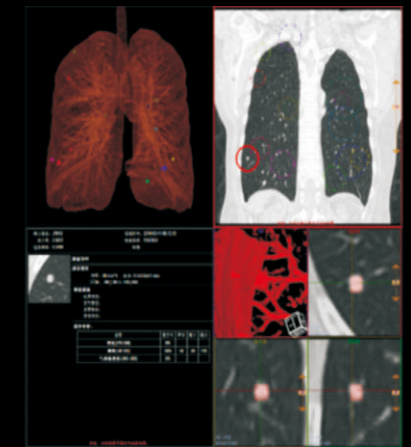
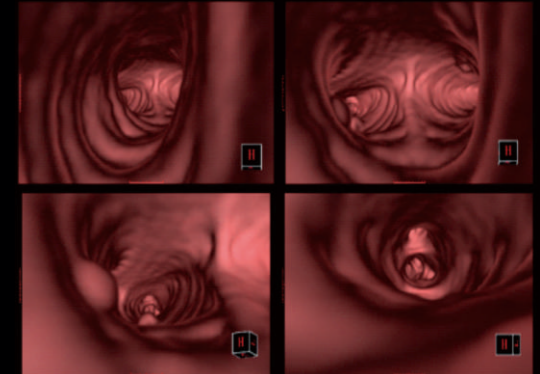
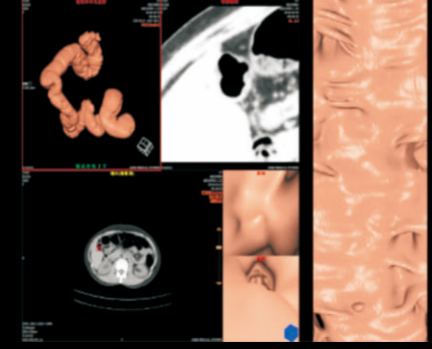
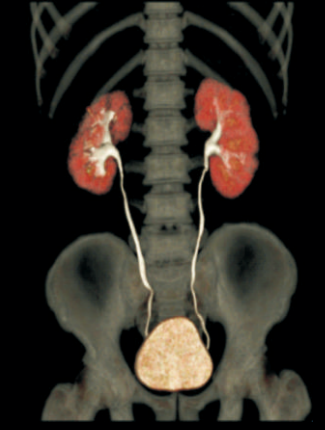
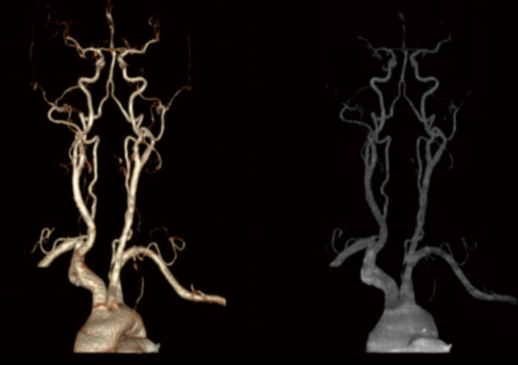
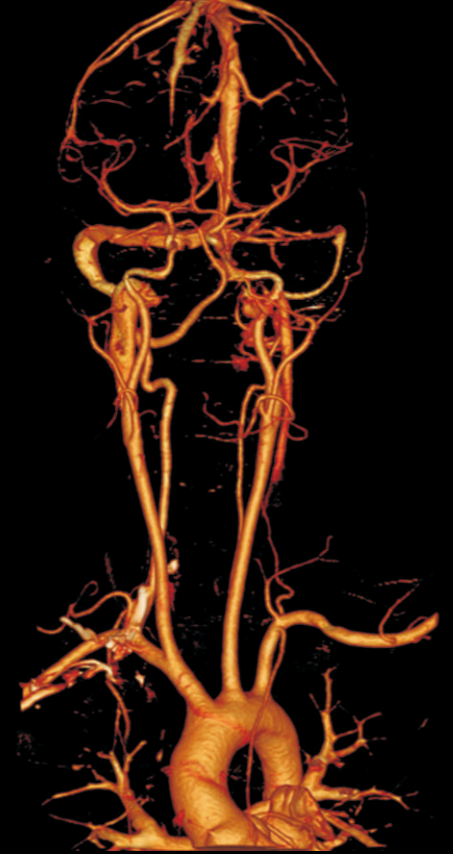


Prospective ECG gating scan



*AccuSpin Spectrum Imaging

AccuSpin dual energy imaging technology uses high / low kVp dual cycle scanning, combined with the current automatic modulation technology of Adose, and achieves energy separation through unique energy algorithm at equivalent dose.



From the moment you choose ANKE, our all-round cooperation begins. Once you are in ANKE's global customer service system, you will experience a complete service solution that is all you expect, all you want and all you need.

