

Relentless Innovation
for your diagnostic confidence

SAMSUNG



V6 ONE

Inspiring everyday efficiency



Product Inquiry

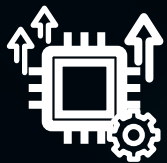
For General Imaging

V6 ONE

For us, this was more than just an evolution. It was about empowering your expertise and building a new level of diagnostic trust. By blending a unified workflow with intuitive technology, we created a supportive foundation so you can focus on what truly matters: your diagnosis, and your patient.

ONE Seamless Experience

One intuitive path that unites complex workflows, enabling a deeper focus on diagnosis.



Upgraded core CPU & OS
Unified premium UI

ONE Confident Result

Turning operator variability into trusted outcomes, with AI as your partner in diagnostic confidence.



Live LiverAssist™, AbdomenAssist™, BladderAssist™,
ProstateAssist™, BowelAssist™

ONE Touch to Simplify

Streamlining complex processes to a single touch, reclaiming time for patient connection.

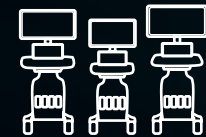
ONE CLICK



EzStructure™, EzFlow™

ONE Standard of Quality

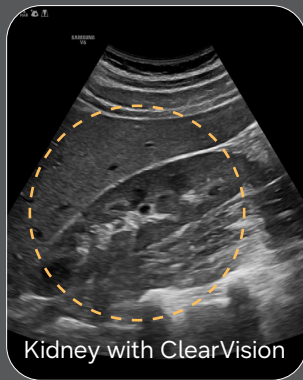
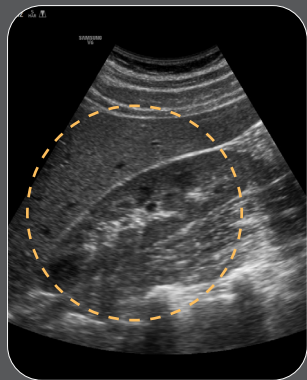
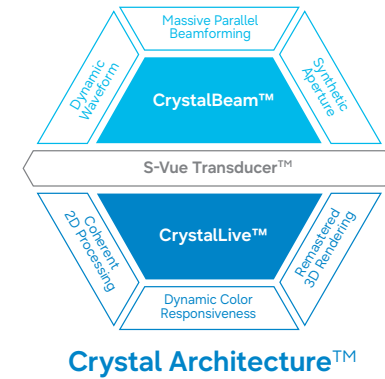
Guided by a commitment to quality, our goal is a more consistent and trusted level of care.



V-Series ONE Platform

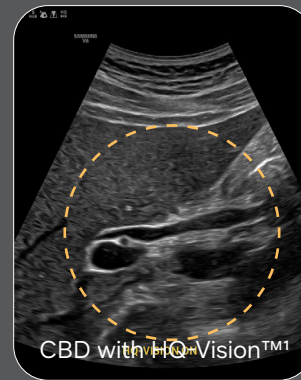
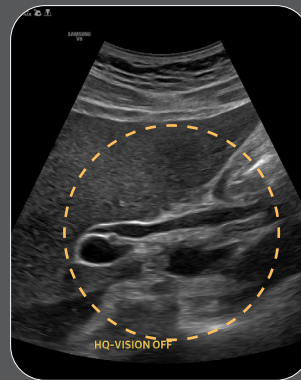
Elevating confidence with superb imaging performance

The V6 ONE delivers exceptional 2D and color image quality tailored for general imaging, driven by Samsung's core imaging engine, Crystal Architecture™. With its comprehensive imaging capabilities, the V6 ONE is designed to seamlessly support your daily ultrasound scanning needs, enabling clear and accurate image acquisition. Experience confidence and accuracy in ultrasound scanning with the V6 ONE.



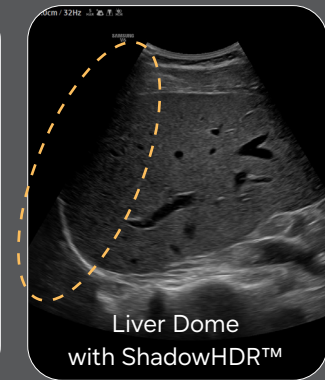
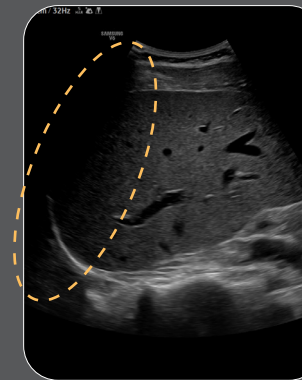
Kidney with ClearVision

Reduce noise to improve 2D image quality



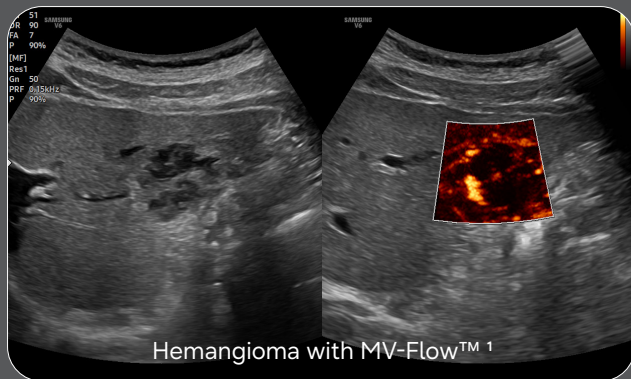
CBD with HQ-Vision™1

Clean up blurry areas in the image



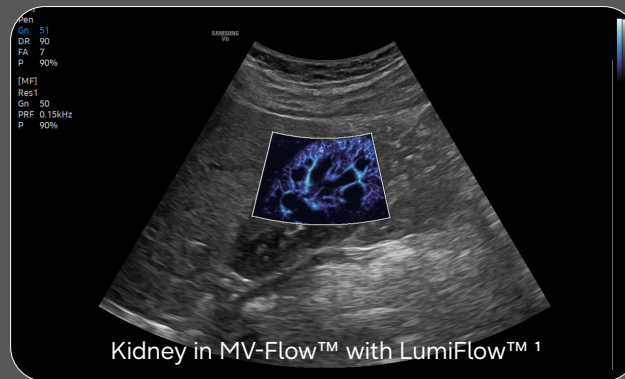
Liver Dome with ShadowHDR™

Enhance hidden structures in shadowed regions



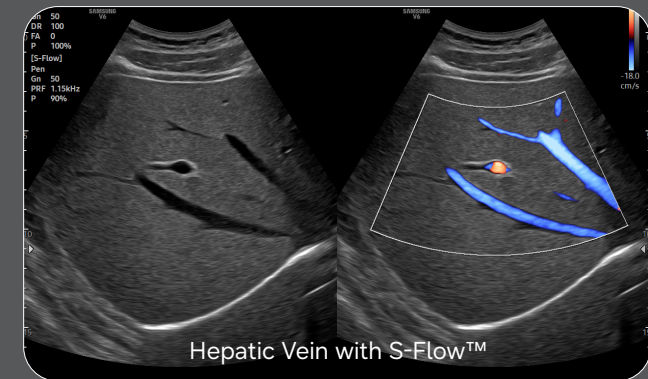
Hemangioma with MV-Flow™ 1

Visualize slow flow in microvascular vessels



Kidney in MV-Flow™ with LumiFlow™ 1

Show blood flow in vessels in a 3D-like display



Hepatic Vein with S-Flow™

Examine hepatic venous outflow track with directional power Doppler

1. Optional feature, additional purchase required.

Reach new diagnostic confidence with comprehensive tools

Enhance your daily ultrasound diagnosis with the V6 ONE, a versatile solution created to efficiently support your clinical demands in general imaging. Benefit from our latest automation tools, which enable you to work with greater ease and achieve reliable results. Our aim is to assist you in prioritizing patient care, and the V6 ONE stands as an excellent choice.

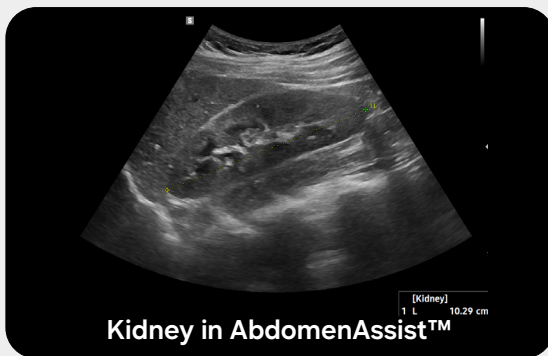
NEW From recognition to result, instant AI-powered measurements

Based on Deep Learning technology, it measures the size of the interested organ, thereby reducing user variability and simplifying workflow.

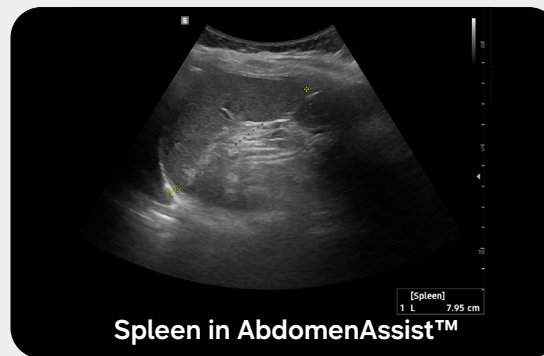
* Target : Kidney, Spleen, Bladder, Prostate, Bowel



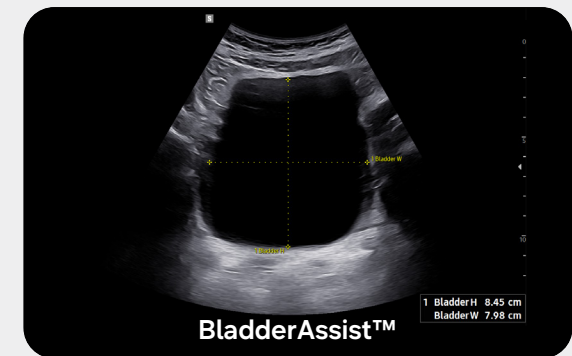
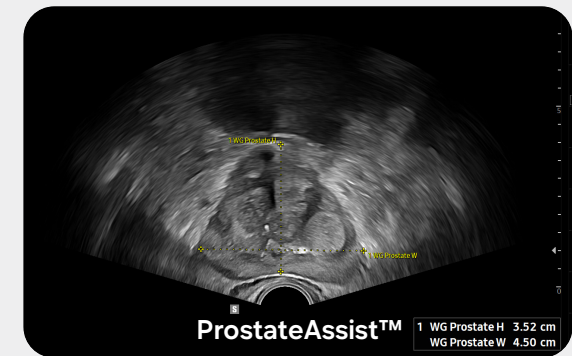
↓ Reduced keystrokes by approximately 75% compared to manual input



↓ Reduced keystrokes by approximately 75% compared to manual input



↓ Reduced keystrokes by approximately 85% compared to manual input



Quantitative measurement of liver fat with ultrasound signal

TAI™¹ (Tissue Attenuation Imaging) provides quantitative tissue attenuation measurement to assess steatotic liver changes.

TSI™¹ (Tissue Scatter distribution Imaging) provides quantitative tissue scatter distribution measurement to assess steatotic liver changes.

Quantify wall motion of the LV, LA, and RV

Strain+¹ is a quantitative tool for measuring global and segmental wall motion of the left ventricle(LV), left atrium(LA), and right ventricle(RV) for systolic and diastolic function of heart.

Analyze selected breast lesions and report breast assessment

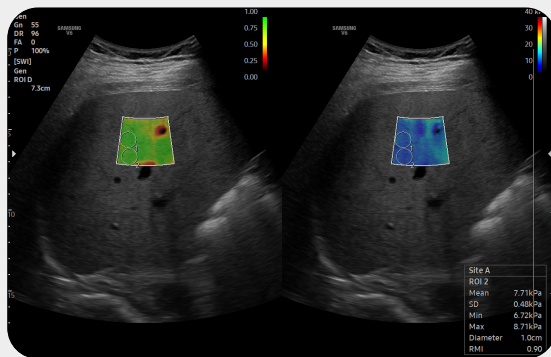


S-Detect™^{1,4} for Breast analyzes selected lesions in the breast ultrasound study and shows the analysis data, applies BI-RADS ATLAS* to provide standardized reporting; and helps diagnosis with the streamlined workflow.

* Breast Imaging-Reporting and Data System, Atlas
It is a registered trademark of ACR and all rights reserved by ACR.

Display and quantify tissue stiffness in a non-invasive method

S-Shearwave Imaging™¹ allows the non-invasive assessment of stiff tissues in various applications. The color-coded elastogram, quantitative measurements, display options, and user-selectable ROI functions are useful for accurate diagnosis.

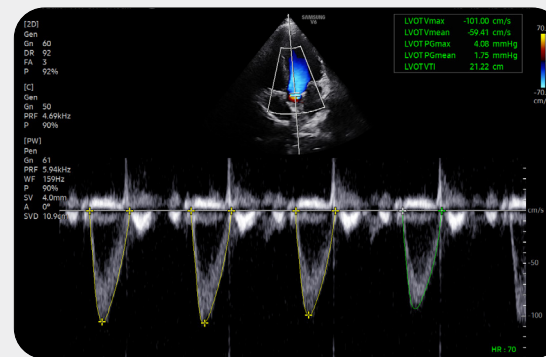


An automated reporting tool for heart diagnosis



HeartAssist™¹, a feature based on Deep Learning technology, provides automatic classification of ultrasound image into measurement views required for heart diagnosis and provides measurement results.

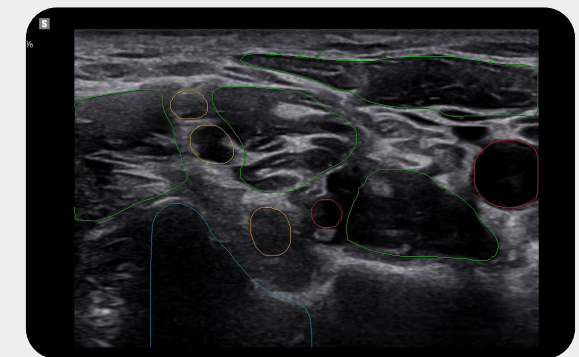
↓ Reduced keystrokes by approximately 94% compared to manual input



Detect and track nerves automatically with AI technology



NerveTrack™¹, a feature based on Deep Learning technology, detects and provides information of the location of the nerve area in real-time during ultrasound scanning.



Optimize workflow with precious time-saving tools

V6 ONE is specifically designed to optimize the work efficiency of healthcare professionals. Notably through its remote accessibility, streamlined workflows, wider screen view for enhanced user experience, and its compact yet powerful design with battery capability, making it adaptable for diverse medical environments.

NEW Optimize image instantly with a single touch

ONE CLICK

EzStructure™ quickly provides optimal 2D images of the region of interest by simply clicking one button.



EzFlow™ streamlines Color and PW image optimization by fine-tuning imaging parameters, with one click of a button. This enables the quick acquisition of optimal images for especially vascular structures, enhancing workflow for routine inspections.

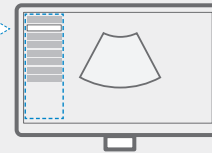
NEW Achieve optimal image quality, instantly and automatically

Live Q-Scan, during the scan, the brightness and uniformity of the B-mode image are automatically adjusted in real time to provide optimal image quality for each organ and region, helping to improve diagnosis and workflow.



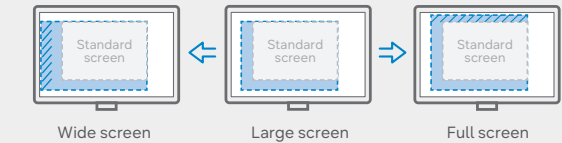
Build predefined protocols to ensure every step is followed every time

EzExam+™¹ enables you to build or use a predefined protocol, and assign protocols for examinations that are regularly performed in the hospital in order to reduce the number of steps that you have to go through.



Select transducer and preset combinations in one click

QuickPreset allows the user to select the most common transducer and preset combinations in one click.



See images in expanded view

The ultrasound examination can be performed while viewing the images and cines that are expanded at various ratios according to the user preference.

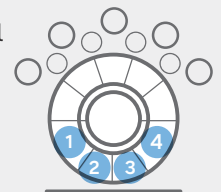
Customize frequently used functions on the touchscreen

TouchEdit, a customizable touchscreen, allows the user to move frequently used functions to the first page.



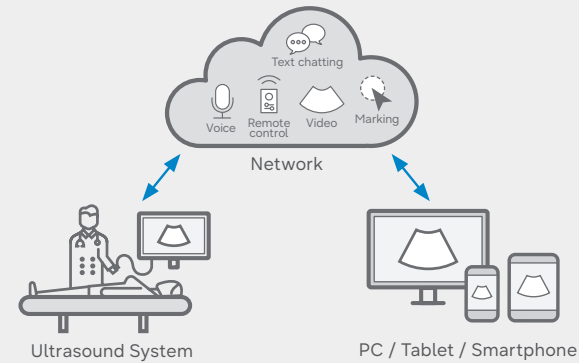
Assign functions to the buttons near the trackball

The buttons around the trackball can be customized for easy selection of commonly used functions.



Save image data directly to USB memory

User can directly export image/cine with a USB device.



Real-time image sharing solution

SonoSync™ 1,5 is available in PC and smartphone, etc. as a real-time image share solution that allows communication for care guide and training between doctors and sonographers. In addition, voice chatting, text chatting and real-time marking functions are provided for better communication; and the MultiVue function is included that allows monitoring multiple ultrasound images on a single screen.

Samsung healthcare cybersecurity

To address the emerging need for cybersecurity, Samsung provides a solution to support our customers by offering the tools to protect against cyberthreats that may compromise invaluable patient data and ultimately degrade the quality of care.



Intrusion prevention



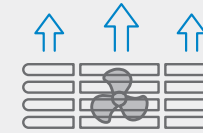
Access control



Data protection

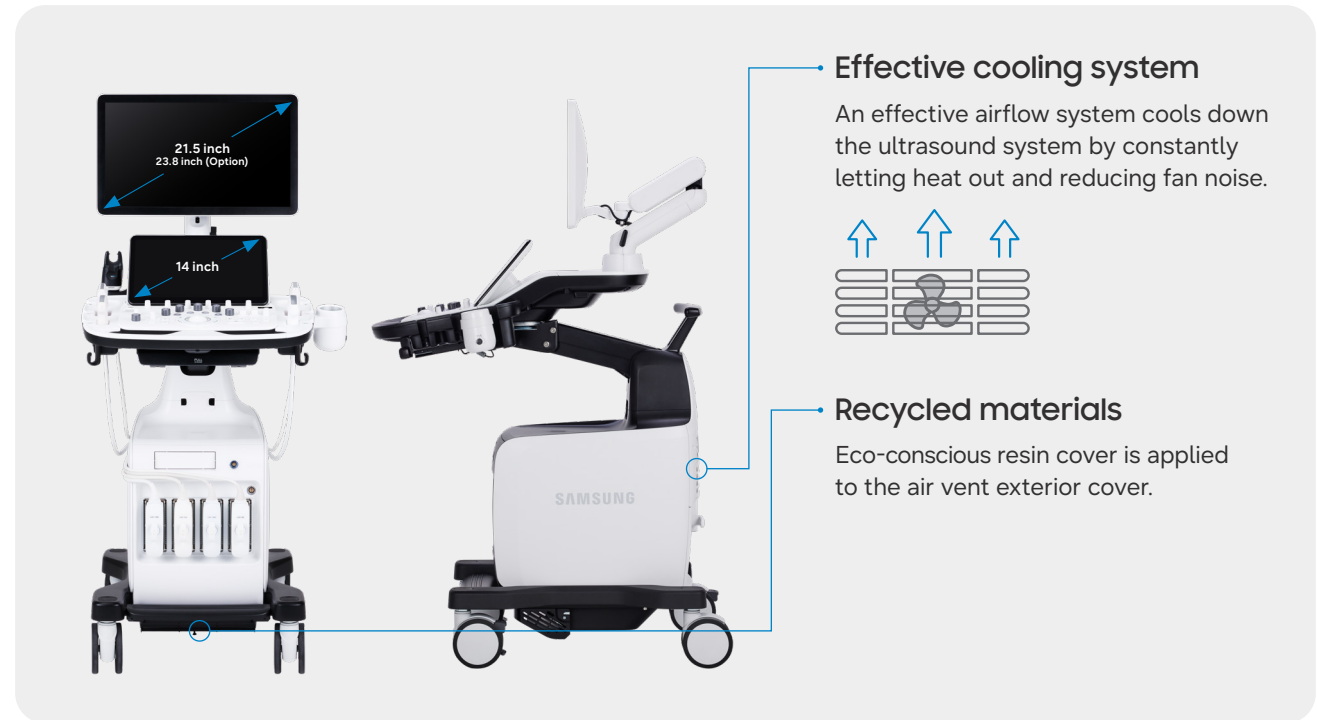
Effective cooling system

An effective airflow system cools down the ultrasound system by constantly letting heat out and reducing fan noise.



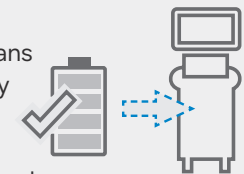
Recycled materials

Eco-conscious resin cover is applied to the air vent exterior cover.



Continue working even when AC power is temporarily unavailable

BatteryAssist™ 1 provides battery power to the system, enabling users to perform scans when AC power is temporarily unavailable. It also allows the system to be moved without having to turn the power off and then back on.



* The live scan time without AC power is about 3 times longer than the live scan time of the previous model, HS60.

1. Optional feature, additional purchase required.

Comprehensive selection of transducers

Curved array transducers



Abdomen, Obstetrics, Gynecology, Pediatric, Musculoskeletal, Vascular, Urology



Abdomen, Obstetrics, Gynecology, Pediatric, Musculoskeletal, Vascular, Urology, Thoracic



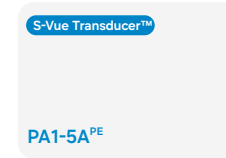
Abdomen, Obstetrics, Gynecology, Pediatric, Musculoskeletal, Vascular, Urology, Thoracic



Abdomen, Pediatric, Vascular



Abdomen, Vascular, Pediatric, TCD



Cardiac, Vascular, Abdomen, Pediatric, TCD, Thoracic



Cardiac, Pediatric, Abdomen, Vascular, TCD



Cardiac, Pediatric, Abdomen, Vascular, TCD

Linear array transducers



Abdomen, Pediatric, Musculoskeletal, Vascular, Small parts



Abdomen, Pediatric, Musculoskeletal, Vascular, Small parts



Musculoskeletal, Pediatric, Vascular, Small parts



Musculoskeletal, Intraoperative



Abdomen, Musculoskeletal, Small parts, Vascular, Pediatric



Urology



Urology

Endocavity transducers



Obstetrics, Gynecology, Urology



Obstetrics, Gynecology, Urology



Obstetrics, Gynecology, Urology

* Ergonomic transducers

The new endocavity transducer supports natural grip by moving the max-width point to a more forward position and also increasing the length of the grip to allow balanced weight distribution.

* This product, features, options, and transducers may not be commercially available in some countries.

* Sales and Shipments are effective only after the approval by the regulatory affairs.

Please contact your local sales representative for further details.

* This product is a medical device, please read the user manual carefully before use.

* S-Vue Transducer™ is the name of Samsung's advanced transducer technology.

1. Optional feature, additional purchase required.

2. Strain value for ElastoScan+™ is not applicable in the United States and Canada.

3. Recommendations about whether results are benign or malignant in S-Detect™ are not applicable in the United States.

4. SonoSync™ is an image sharing solution.

SAMSUNG MEDISON CO., LTD.

© 2026 Samsung Medison All Rights Reserved.

Samsung Medison reserves the right to modify the design, packaging, specifications, and features shown herein, without prior notice or obligation.