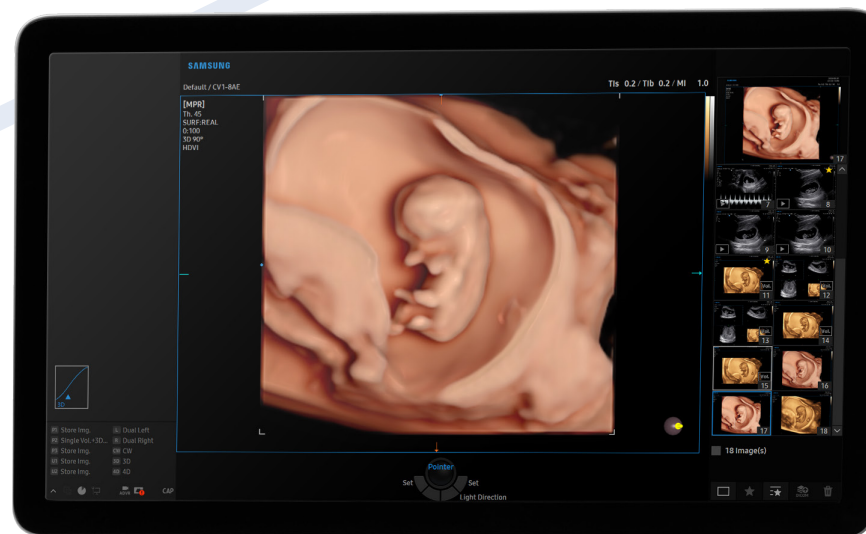


# V5

From basics to brilliance



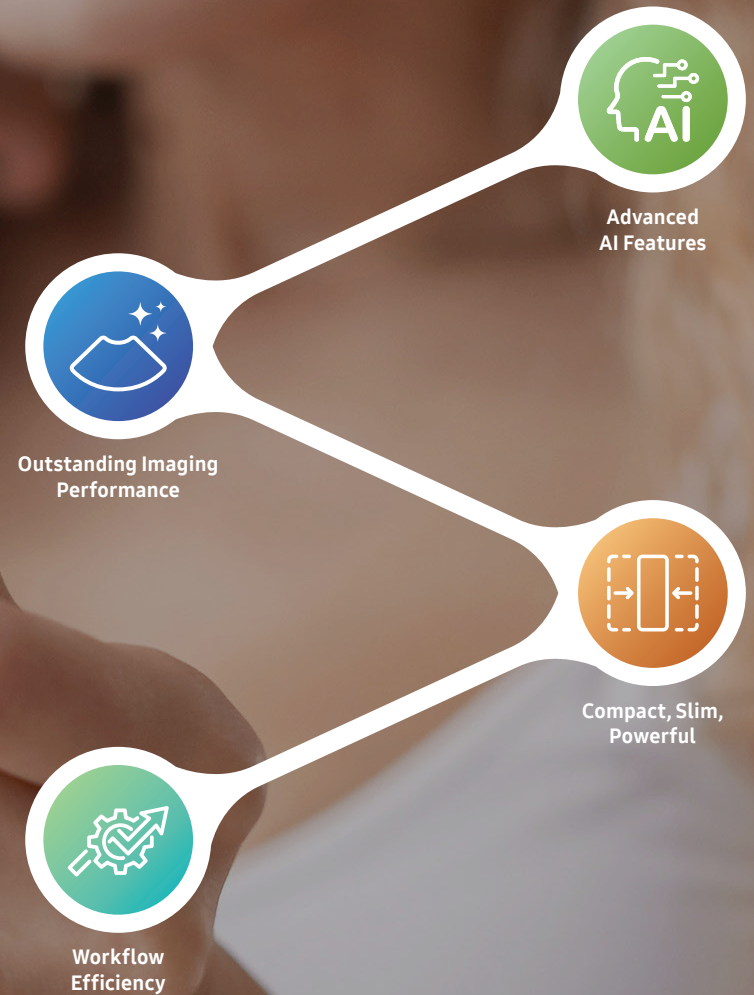
# From basics to brilliance

Ultrasound technology is integral to modern fertility treatments, offering essential insights into reproductive health. By providing detailed views of the uterus and ovaries, ultrasound scans are critical for monitoring ovarian activity, assessing the endometrial lining, and tracking follicle development. These capabilities are especially crucial during procedures, where precision in egg retrieval and accurate needle guidance through the vaginal wall are paramount. With the V5 ultrasound system, clinics can perform daily, precise, and effective REI diagnostics, enhancing the likelihood of successful outcomes and improving patient care across all stages of treatment.

\* V5 ultrasound system supports Windows 11 operating system, complying with the latest security standards.



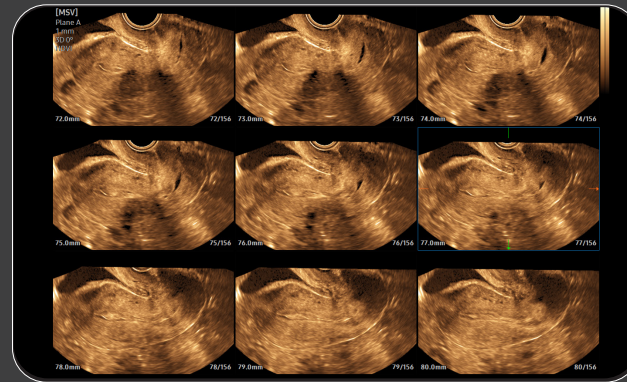
Learn more



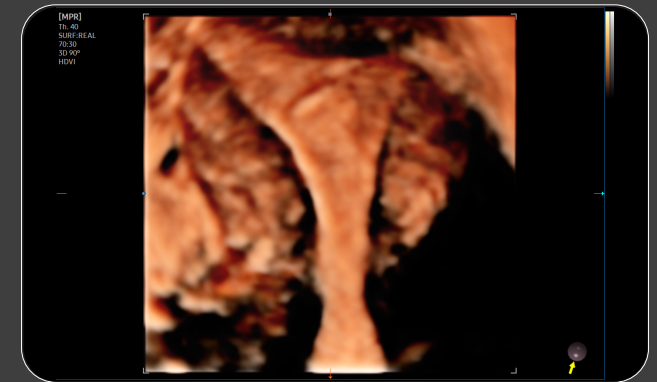
# Striking images for extra confidence



Transabdominal GYN



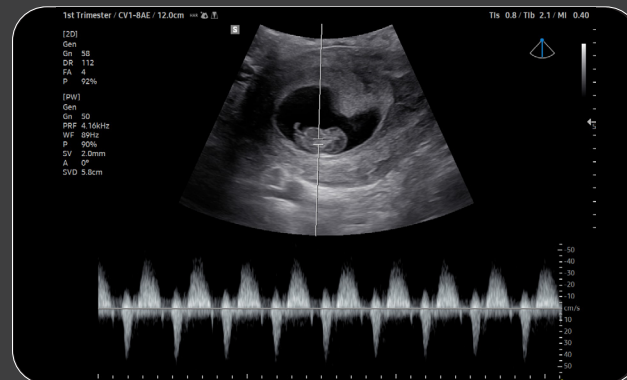
Endometrium polyp with 3D MSV



Endometrium polyp with RealisticVue™<sup>1</sup>



Embryo with yolk sac



1st trimester fetal heart PW Doppler



Embryo with RealisticVue™<sup>1</sup>

1. Optional feature, additional purchase required.

# Achieve REI precision with superior imaging

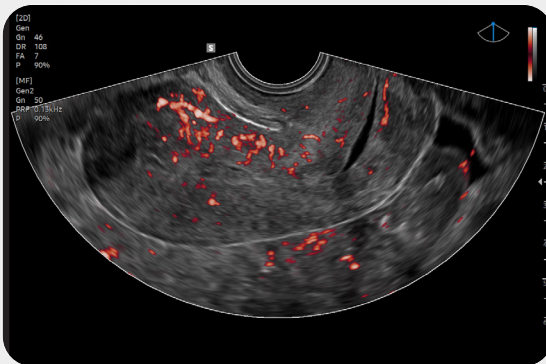
The V5 ultrasound system stands out with its exceptional 2D, 3D, and color image quality, specifically optimized to meet the unique needs of IVF diagnostics. Designed to facilitate daily ultrasound scanning specifically for IVF applications, the V5 ensures clear and accurate image acquisition. Experience enhanced confidence and precision in every scan, making it an indispensable tool for IVF treatment success.

## Provide uniform imaging performance from near-to-far

**S-Harmonic™** mitigates the signal noise, enhances contrast, and provides uniform image performance of overall image area from near-to-far.

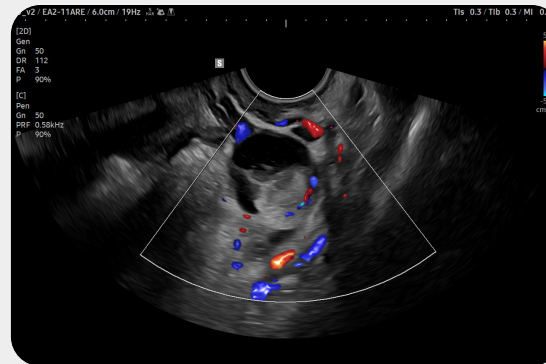
## Visualize slow flow in microvascular structures

**MV-Flow™<sup>1</sup>** visualizes microcirculatory and slow blood flow to display the intensity in color. It is suitable for observation of microcirculatory and volume of slow blood flow.



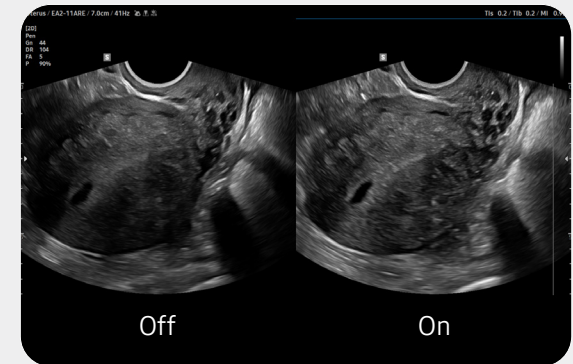
## Show blood flow in vessels in a 3D like display

**LumiFlow™<sup>1</sup>** is a function that visualizes blood flow in three dimensional-like to help understand the structure of blood flow and small vessels intuitively.



## Enhance hidden structures in shadowed regions

**ShadowHDR™** selectively applies high-frequency and low-frequency of the ultrasound to identify shadow areas such as fetal head or spine where attenuation occurs.



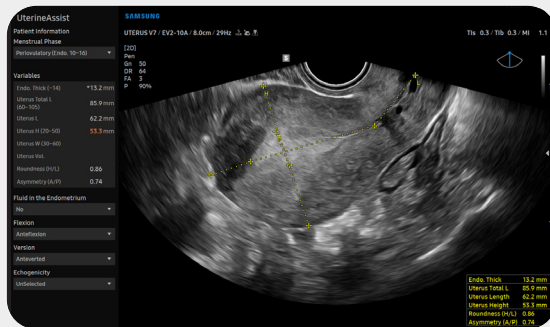
# Unlock fertility care with advanced diagnostics

V5 ultrasound system offers a comprehensive set of features that enable healthcare professionals to monitor and manage fertility-related conditions effectively. Integrated advanced solutions ensure that the system can optimize patient outcomes in today's fast-paced clinical settings, handling detailed aspects of fertility care with precision and attention.

## Measure the size and shape of the uterus with AI technology



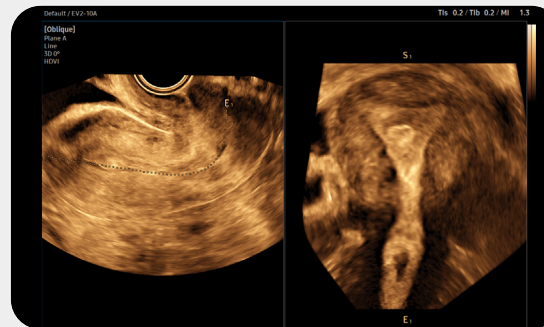
**UterineAssist™**<sup>1</sup>, based on Deep Learning technology, automatically measures the size and shape of the uterus, assisting in detecting signs of uterine-related abnormalities, as well as reducing scan time.



## A feature to extract the centerline and thickness of endometrium

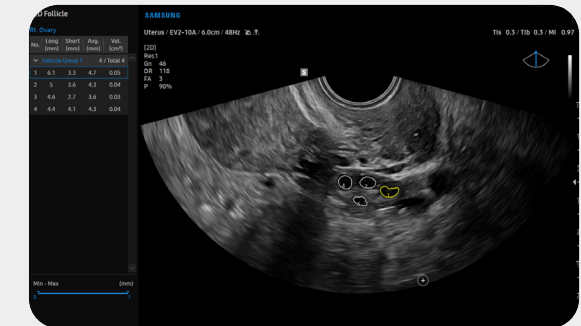
**UterineContour™** semi-automatically extracts the centerline and thickness of the curved endometrium and provides a coronal view in 3D, flattened by the centerline. In addition, uterine malformation classification are reported according to the \*ESHRE/ESGE or ASRM guideline selection.

\* ESHRE/ESGE : The European Society of Human Reproduction and Embryology / The European Society for Gynaecological Endoscopy  
 \* ASRM : The American Society for Reproductive Medicine



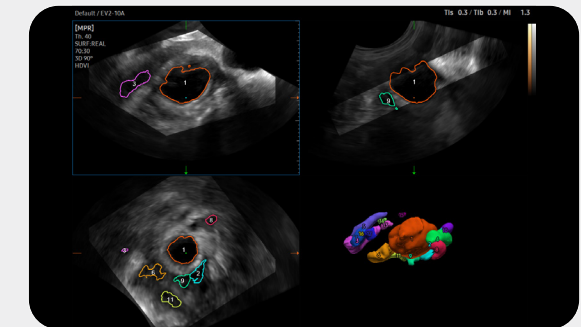
## Measure the size of follicles based on 2D imaging

**2D Follicle™**<sup>1</sup> is a function to measure the size of follicles based on 2D image and to provide information about the status during controlled ovarian stimulation.



## Assess the risk of infertility using volume data

**5D Follicle™**<sup>1</sup> identifies and measures multiple ovarian follicles in one scan for rapid assessment of follicular size and status during controlled ovarian stimulation.

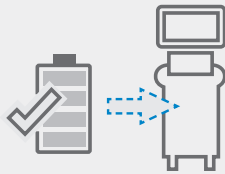


# Enhance daily efficiency

The V5 ultrasound system enhances efficiency with advanced workflow solutions, remote accessibility, a larger screen view, and a compact, robust structure with convenient battery. These elements make it ideal for healthcare professionals seeking to improve productivity and patient care.

## Continue working even when AC power is temporarily unavailable

**BatteryAssist™<sup>1</sup>** provides battery power to the system, enabling users to perform scans when AC power is temporarily unavailable. It also allows to transport the ultrasound system to another location and start to scan right away.



## Build predefined protocols to ensure every step is followed every time

**EzExam+™<sup>1</sup>** enables you to build or use a predefined protocol, and assign protocols for examinations that are regularly performed in the hospital in order to reduce the number of steps that you have to go through.



## Customize frequently used functions on the touchscreen

**TouchEdit**, a customizable touchscreen, allows the user to move frequently used functions to the first page.



## Compare previous and current exam in a side-by-side display

**EzCompare™** automatically matches the image settings, annotations, and bodymarkers from the prior study.



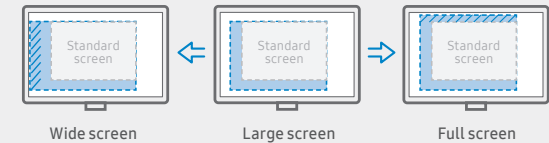
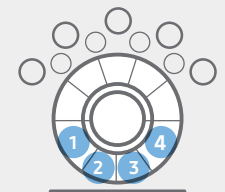
## Select transducer and preset combinations in one click

**QuickPreset** allows the user to select the most common transducer and preset combinations in one click.



## Assign functions to the buttons near the trackball

The buttons around the trackball can be customized for easy selection of commonly used functions.



## See images in expanded view

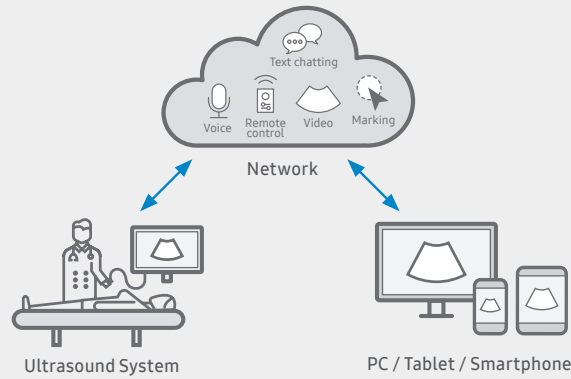
The ultrasound examination can be performed while viewing the images and cines that are expanded at various ratios according to the user preference.

## Real-time image sharing solution

SonoSync™<sup>1,4</sup> is available in PC and smartphone, etc. as a real-time image share solution that allows communication for care guide and training between doctors and sonographers. In addition, voice chatting, text chatting, video conference, and real-time marking functions are provided for better communication; and the MultiVue function is included that allows monitoring multiple ultrasound images on a single screen.



Learn more



## Samsung healthcare cybersecurity

To address the emerging need for cybersecurity, Samsung provides a solution to support our customers by offering the tools to protect against cyberthreats that may compromise invaluable patient data and ultimately degrade the quality of care.



Learn more



Intrusion prevention



Access control



Data protection



### Functions



WIFI



Height control

### Accessories <sup>1</sup>



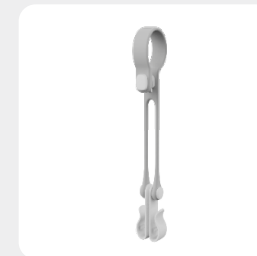
New gel warmer



Side bag



Endocavity probe holder



Cable hook



Keyboard

# Comprehensive selection of transducers

## Curved array transducers



Abdomen, Obstetrics, Gynecology, Pediatric, Musculoskeletal, Vascular, Urology, Thoracic



Abdomen, Obstetrics, Gynecology, Pediatric, Musculoskeletal, Vascular, Urology

## Endocavity transducers



Obstetrics, Gynecology, Urology



Obstetrics, Gynecology, Urology



Obstetrics, Gynecology, Urology

## Volume transducers



Abdomen, Obstetrics, Gynecology, Urology



Obstetrics, Gynecology, Urology

### \* Ergonomic transducers

The new endocavity transducer supports natural grip by moving the max-width point to a more forward position and also increasing the length of the grip to allow balanced weight distribution.



Cleaning and disinfection guide

\* This product, features, options, and transducers may not be commercially available in some countries.  
 \* Sales and Shipments are effective only after the approval by the regulatory affairs.  
 Please contact your local sales representative for further details.  
 \* This product is a medical device, please read the user manual carefully before use.  
 \* S-View Transducer™ is the name of Samsung's advanced transducer technology.  
 \* V5 ultrasound system supports Windows 11 operating system, complying with the latest security standards.

1. Optional feature, additional purchase required.  
 2. Strain value for ElastoScan+™ is not applicable in the United States and Canada.  
 3. Recommendations about whether results are benign or malignant in S-Detect™ are not applicable in the United States.  
 4. SonoSync™ is a function for image sharing, not for diagnosis.

## SAMSUNG MEDISON CO., LTD.

© 2026 Samsung Medison All Rights Reserved.  
 Samsung Medison reserves the right to modify the design, packaging, specifications, and features shown herein, without prior notice or obligation.

