



Viola DBT

Unique Digital Mammography
with Tomosynthesis

www.gmmspa.com



VIOLA DBT ALL-IN-ONE SYSTEM

ERGONOMICS AND CUTTING-EDGE TECHNOLOGY



VIOLA DBT ALL-IN-ONE & VERSATILITY

- FFDM 2D
- Tomosynthesis 3D
- Synthetic image (G-VIEW)
- Unique Biopsy with Tomosynthesis or Stereo with the patient in prone position
- Dual Energy - Contrast Enhanced Spectral Mammography (CESM)

EXCELLENCE IN TECHNOLOGY & IMAGE QUALITY

- AWS: Intuitive, touchscreen controls and complete of a dedicated management software for breast care
- Highest clinical quality thanks to a number of cutting-edge technologies:
 - Tomosynthesis Step & Shoot
 - Original Pixels: No Binning (85 μm)
 - Iterative reconstruction software dedicated to Tomosynthesis
- X-Ray Assembly: special X-Ray tube air-cooled by aluminium alloy heat sinks
- Innovative selenium detector



» DUAL ENERGY

CONTRAST ENHANCED SPECTRAL MAMMOGRAPHY (CESM)

- Digital mammography with dual-energy in combination with an injection of iodized contrast medium
- A traditional 2D positioning and a single compression: two images are acquired, one low-energy and the other high-energy. The image subtraction quickly generates one clinical image to reveal tumor angiogenesis

» ITERATIVE RECONSTRUCTION SOFTWARE

Designed to produce images with the least number of artifacts: maximum speed and accuracy.

» NO BINNING

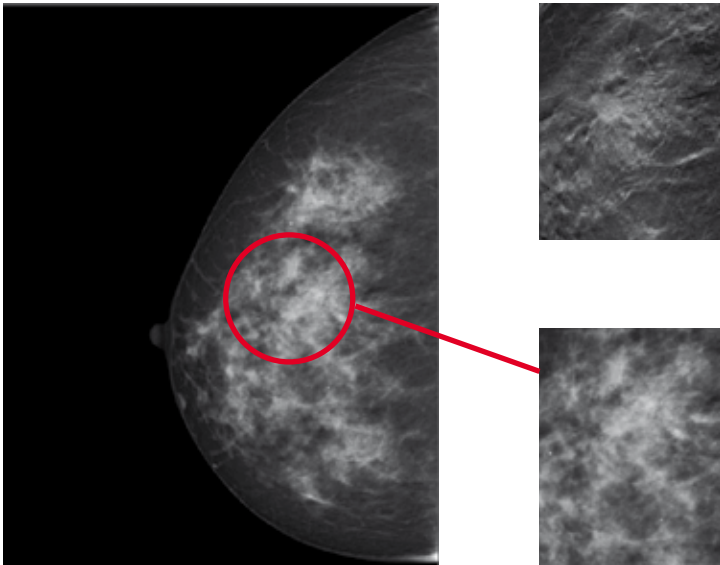
Maximum image resolution without binning: better visualization of microcalcifications and structures.

» STEP & SHOOT

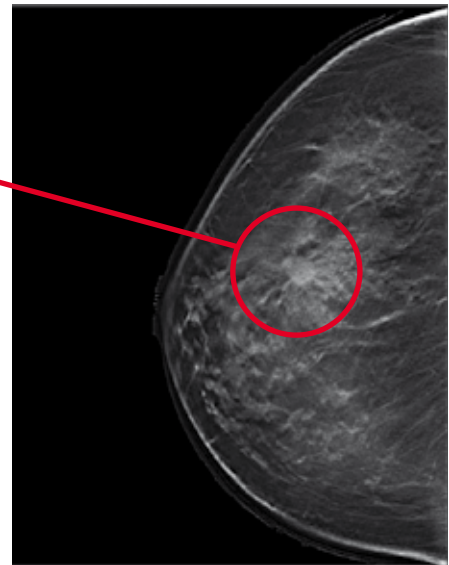
Sharper outlines and no blurring.

EXCELLENCE IN IMAGE QUALITY... FROM 2D TO 3D...

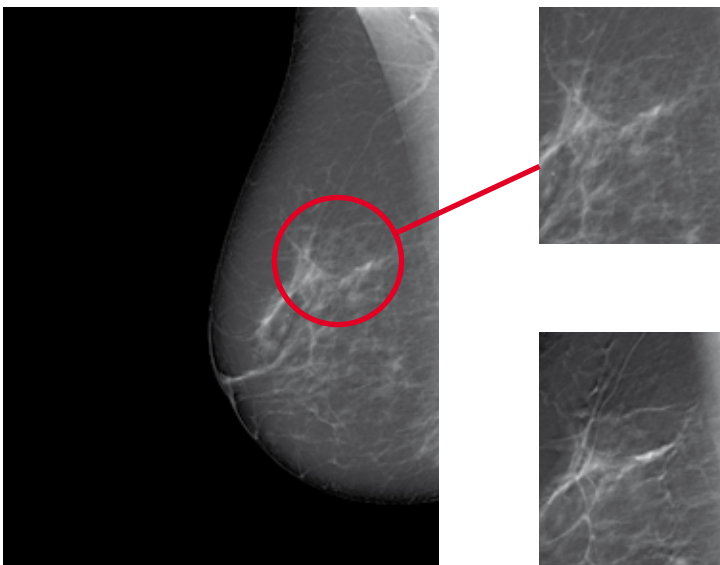
Digital mammography hardly reveals a parenchymal distortion, not clearly identified with the magnification.



The same breast analyzed with Tomosynthesis gives an improvement in detection and in lesion's characterization.



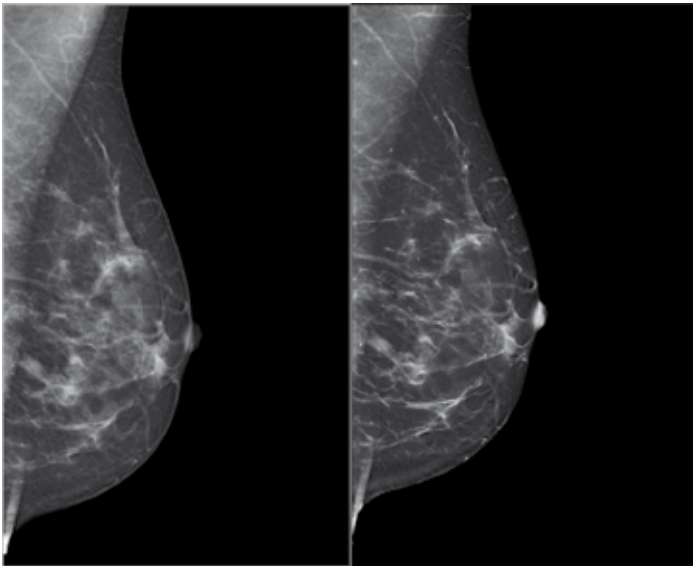
2D Mammograph: suspicious microcalcifications are barely visible.



Tomosynthesis: the overall visibility is considerably improved.

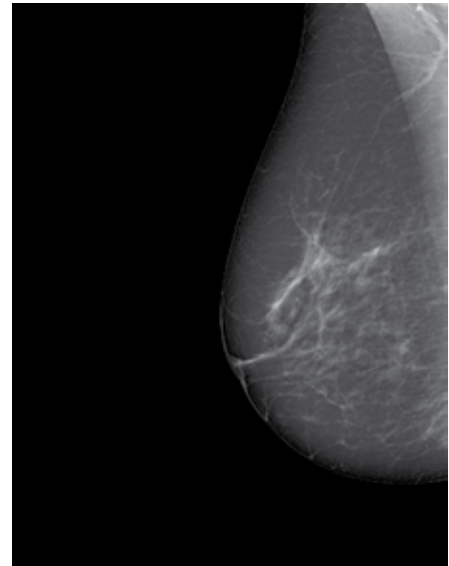


... AND FROM 3D TO 2D



Conventional 2D FFDM.

Synthesized image from tomosynthesis.



Synthetic Image G-VIEW.

G-VIEW SYNTHETIC IMAGE: FROM 3D TO 2D

G-VIEW Synthetic generates an image without the need of an extra exposure, drastically reducing the dose and the compression time. Images can be reviewed after the tomosynthesis exposure in just a few seconds.





HIGHEST ACHIEVABLE COMFORT

ERGONOMICS NEVER SEEN BEFORE

- Tomosynthesis and 2D mammography at 360° in upright or tilted position
- VIOLA DBT takes advantage from the gravity effect to view retromammary tissue more easily
- All movements are automatic and programmable
- Rapid and easy in every screening and clinical condition
- Tilting is possible in every direction, even toward the patient

VIOLA DBT brings to the highest level of patient comfort and muscle relaxation.

EXCELLENCE IN VERSATILITY

POSSIBILITY TO WORK IN TOMOSYNTHESIS, STEREO OR COMBINED MODE

A SOLUTION FOR ALL IMAGING CHALLENGES INCLUDING PRONE BIOPSY

- VIOLA DBT can be quickly transformed into a **dedicated unit for biopsy** with the patient in prone position
- Thanks to a dedicated table, the patient can be positioned and the breast quickly centered to start the biopsy procedure with the **highest degree of comfort** both for the patient and the operator
- Maximum accessibility and work area for the operator: **360° access**
- **Fast and intuitive software**
- **Compatibility** with every biopsy system on the market



INTERVENTIONAL MAMMOGRAPHY PRONE BIOPSY TABLE

- Can be either connected or used with batteries
- Vertical range of 800 mm
- Motorized adjustment of the backrest from 45° to the horizontal position
- Remote control of the upright movement and the backrest position
- Adjustable breast aperture with diameter of 250 mm + 100 mm in all directions
- Side protection guard rails
- Pair of wheels
- Extension support for all types of patient
- Left and right steps



STEREOTACTIC, TOMOSYNTHESIS OR COMBINED BIOPSY

- Interchangeable guides for compatibility with all types of biopsy drivers
- Motorized and/ or manual compression system with handles
- Touch screen control panel on both sides of the compression arm on the AWS station



DETAILS THAT MAKE THE DIFFERENCE



CONTROL PANELS:
Easily reached by the operator, located on both sides of the unit and the x-ray tube. These controls enable all movements or activation of the programmed sequence.



TOUCHSCREEN DISPLAYS:
Located on both sides of the compressor's base, allow an easy consultation in each moment.



DATA SHOWN:
Compressor force, compressed breast thickness, rotation and inclination of the tube-detector.





AWS: ACQUISITION WORKSTATION

Extremely intuitive for the operator

Equipped with a clinical screen for images' displaying and with a second versatile touchscreen where all unit's parameters can be easily checked and managed.

The MOBILE AWS mounted on wheels always allows the most convenient placement.



GET IN TOUCH

GENERAL MEDICAL MERATE SPA
Via Partigiani, 25
24068 SERIATE (BG) - Italy

Phone +39 035 45 25 311
Fax +39 035 29 77 87
info@gmmspa.com

www.gmmspa.com

